

Subdivisions Built in the R1-20 Zone

Subdivision: Madison Development
 Street: Casey Court, Emma Lane
 Zone: R1-20 (20,000 SF minimum)

SBL	Built	House (sf)	Lot Size (a)	Lot Size (sf)	Impervious Area (sf)	% Impervious Area	Amenities
15.07-1-8	2003	1,782	0.70	30,492.0	3,750	12.3%	House, Driveway
15.07-1-9	2004	1,373	1.00	43,560.0	3,584	8.2%	House, Driveway
15.07-1-10	2004	1,794	0.66	28,749.6	3,624	12.6%	House, Driveway
15.07-1-11	2004	1,583	0.81	35,283.6	3,641	10.3%	House, Driveway
15.07-1-12	2004	1,782	0.62	27,007.2	4,475	16.6%	House, Driveway
15.07-1-13	2003	2,082	0.56	24,393.6	4,911	20.1%	House, Driveway
15.07-1-14	2004	2,863	0.47	20,473.2	7,554	36.9%	House, Driveway
15.07-1-15	2004	3,358	0.47	20,473.2	4,794	23.4%	House, Driveway
15.07-1-16	2003	2,821	0.46	20,037.6	3,652	18.2%	House, Driveway
15.07-1-17	2003	1,813	0.56	24,393.6	4,116	16.9%	House, Driveway
15.07-1-18	2003	2,863	0.53	23,086.8	6,146	26.6%	House, Driveway
15.07-1-19	2003	3,114	0.53	23,086.8	4,736	20.5%	House, Driveway
15.07-1-20	2003	3,098	0.49	21,344.4	5,434	25.5%	House, Driveway
15.07-1-21	2003	2,956	0.47	20,473.2	3,120	15.2%	House, Driveway
15.07-1-22	2004	1,583	0.50	21,780.0	3,536	16.2%	House, Driveway
15.07-1-23	2004	1,813	0.49	21,344.4	4,292	20.1%	House, Driveway
15.11-1-19	2003	3,326	1.05	45,738.0	3,914	11.9%	House, Driveway
15.11-1-20	2004	3,098	0.98	42,688.8	3,609	7.3%	House, Driveway
15.11-1-21	2004	3,326	0.63	27,442.8	4,944	12.9%	House, Driveway
15.11-1-22	2004	3,098	0.57	24,829.2	3,971	17.3%	House, Driveway
15.11-1-23	2004	3,326	0.66	28,749.6	5,841	13.6%	House, Driveway
15.11-1-24			1.25	54,450.0		0.0%	Town Rec Parcel
15.11-1-25	2004	2,996	0.50	21,780.0	4,321	19.8%	House, Driveway
15.11-1-26	2004	1,832	0.54	23,522.4	3,856	16.4%	House, Driveway
15.11-1-27	2004	1,583	0.47	20,473.2	3,867	18.9%	House, Driveway
15.11-1-28	2004	1,831	0.73	31,798.8	6,704	21.1%	House, Driveway
15.11-1-29	2004	2,047	0.82	35,719.2	6,652	18.6%	House, Driveway
TOTALS			17.52	763,171	119,044	15.6%	

Subdivision: Contemporary Acres
 Street: Wildwood Court, Wildwood Street
 Zone: R1-20 (20,000 SF minimum)

SBL	Built	House (sf)	Lot Size (a)	Lot Size (sf)	Impervious Area (sf)	% Impervious Area	Amenities
16.15-1-62	1992	2,484	0.62	27,007.2	3,799	14.1%	House, Driveway
16.15-1-63	1993	2,484	0.69	30,056.4	4,343	14.4%	House, Driveway
16.15-1-64	1991	2484	0.91	39,639.6	4,170	10.5%	House, Driveway
16.15-1-65	1993	2708	0.72	31,363.2	4,301	13.7%	House, Driveway, Pool
16.15-1-66	1992	2484	0.62	27,007.2	3,526	13.1%	House, Driveway
16.15-1-67	1992	2,540	0.82	35,719.2	6,410	17.9%	House, Driveway, Pool
16.15-1-68	1995	2,784	1.10	47,916.0	4,610	9.6%	House, Driveway, Pool

Subdivisions Built in the R1-20 Zone

16.15-1-69	1992	2,784	0.85	37,026.0	6,571	17.7%	House, Driveway, Pool
16.15-1-70	1990	1,252	0.59	25,700.4	4,463	17.4%	House, Driveway, Pool
16.15-1-71	1990	2,744	0.48	20,908.8	4,076	19.5%	House, Driveway
16.15-1-72	1992	2,484	0.48	20,908.8	3,292	15.7%	House, Driveway
16.15-1-73	1992	2,744	0.48	20,908.8	3,670	17.6%	House, Driveway
16.15-1-74	1990	2,484	0.55	23,958.0	3,236	13.5%	House, Driveway
16.15-1-75	1990	2,708	0.59	25,700.4	4,451	17.3%	House, Driveway, Pool
16.15-1-76	1992	2,728	0.49	21,344.4	2,643	12.4%	House, Driveway
16.15-1-77	1990	2,708	0.51	22,215.6	3,118	14.0%	House, Driveway
16.15-1-78	1990	2,484	0.49	21,344.4	3,095	14.5%	House, Driveway
16.15-1-79	1992	2,784	0.57	24,829.2	3,408	13.7%	House, Driveway
16.15-1-80	1990	2,484	0.57	24,829.2	3,450	13.9%	House, Driveway
16.15-1-81	1992	2,484	0.53	23,086.8	3,059	13.2%	House, Driveway
16.16-1-6	1992	2,484	0.48	20,908.8	3,852	18.4%	House, Driveway
16.16-1-7	1992	2,484	0.48	20,908.8	2,950	14.1%	House, Driveway
16.16-1-8	1990	3,018	0.50	21,780.0	4,028	18.5%	House, Driveway, Pool
16.16-1-11			15.96	695,217.6	0	0.0%	Open Space Parcel
16.16-1-12	1994	2,484	0.98	42,688.8	2,906	6.8%	House, Driveway
16.16-1-13	1992	2,560	0.54	23,522.4	3,581	15.2%	House, Driveway
16.16-1-14	1990	2,708	0.64	27,878.4	2,968	10.6%	House, Driveway
16.16-1-15	1994	2,432	1.36	59,241.6	3,200	5.4%	House, Driveway
16.16-1-16	1995	2,080	1.94	84,506.4	2,582	3.1%	House, Driveway
16.16-1-17	1993	1,080	1.00	43,560.0	2,550	5.9%	House, Driveway
TOTALS			36.54	1,591,682	108,308	6.8%	

Subdivision: New Hope Farm
 Street: London Road at Ferncrest Drive
 Zone: R1-20 (20,000 SF minimum)

SBL	Built	House (sf)	Lot Size (a)	Lot Size (sf)	Impervious Area (sf)	% Impervious Area	Amenities
16.20-1-1	1987	3,073	0.49	21,344.4	4,573	21.4%	House, Driveway
16.20-1-2	1987	2,211	0.49	21,344.4	4,094	19.2%	House, Driveway
16.20-1-3	1987	3,501	0.52	22,651.2	7,113	31.4%	House, Driveway, Pool
16.20-1-4	1987	2,971	0.54	23,522.4	5,790	24.6%	House, Driveway, Pool
16.20-1-5	1987	2,211	0.61	26,571.6	5,150	19.4%	House, Driveway, Pool
16.20-1-6	1987	2,211	0.41	17,859.6	3,273	18.3%	House, Driveway
16.20-1-7	1987	2,471	0.40	17,424.0	3,466	19.9%	House, Driveway
16.20-1-8	1987	2,211	0.39	16,988.4	6,647	39.1%	House, Driveway, Pool
16.20-1-9	1987	2,646	0.63	27,442.8	4,989	18.2%	House, Driveway
16.20-1-10	1987	2,646	0.66	28,749.6	3,953	13.7%	House, Driveway, Pool
16.20-1-11	1987	2,211	0.59	25,700.4	3,660	14.2%	House, Driveway, Pool
16.20-1-12	1987	1,644	0.49	21,344.4	3,868	18.1%	House, Driveway
16.20-1-13	1993	2,497	0.54	23,522.4	4,434	18.9%	House, Driveway
16.20-1-14	1990	2,470	0.48	20,908.8	7,550	36.1%	House, Driveway, Pool, Tennis Court
16.20-1-15	1990	2,471	0.48	20,908.8	3,583	17.1%	House, Driveway, Pool, Shed
16.20-1-16	1990	2,204	0.51	22,215.6	3,914	17.6%	House, Driveway, Pool
16.20-1-17	1990	2,362	0.59	25,700.4	2,627	10.2%	House, Driveway, Pool
16.20-1-18	1989	3,089	0.95	41,382.0	9,189	22.2%	House, Driveway, Pool
16.20-1-19	1992	2,492	0.56	24,393.6	3,108	12.7%	House, Driveway

Subdivisions Built in the R1-20 Zone

16.20-1-20	1990	2,812	0.47	20,473.2	3,080	15.0%	House, Driveway, Pool
16.20-1-21	1991	3,254	0.48	20,908.8	3,749	17.9%	House, Driveway, Pool, Shed
16.20-1-22	1990	2,204	0.59	25,700.4	4,780	18.6%	House, Driveway
16.20-1-23	1993	2,497	0.65	28,314.0	3,752	13.3%	House, Driveway
16.20-1-24	1990	2,471	0.77	33,541.2	3,873	11.5%	House, Driveway
16.20-1-25	1992	2,812	0.51	22,215.6	3,362	15.1%	House, Driveway
16.20-1-26	1990	2,811	0.55	23,958.0	7,698	32.1%	House, Driveway, Pool
16.20-1-27	1990	2,471	0.50	21,780.0	3,710	17.0%	House, Driveway
16.20-1-28	1989	3,089	0.70	30,492.0	6,219	20.4%	House, Driveway, Pool
16.20-1-29	1990	2,812	0.73	31,798.8	4,899	15.4%	House, Driveway, Pool
16.20-1-30	1989	3,089	0.75	32,670.0	6,723	20.6%	House, Driveway
16.20-1-31	1989	2,751	0.50	21,780.0	3,471	15.9%	House, Driveway
16.20-1-32	1990	2,471	0.49	21,344.4	5,538	25.9%	House, Driveway, Pool
16.20-1-33	1990	2,471	0.53	23,086.8	5,415	23.5%	House, Driveway
16.20-1-34	1990	2,340	0.70	30,492.0	4,057	13.3%	House, Driveway
16.20-1-35	1990	2,812	0.60	26,136.0	4,387	16.8%	House, Driveway
16.20-1-36	1990	2,812	0.57	24,829.2	4,810	19.4%	House, Driveway
16.20-1-37	1990	2,812	0.59	25,700.4	4,588	17.9%	House, Driveway, Pool
16.20-1-38	1990	2,470	0.53	23,086.8	4,509	19.5%	House, Driveway, Pool
26.08-1-6	1987	2,722	0.46	20,037.6	3,507	17.5%	House, Driveway
26.08-1-7	1988	3,423	0.54	23,522.4	4,532	19.3%	House, Driveway
26.08-1-8	1988	2,533	0.51	22,215.6	3,604	16.2%	House, Driveway
26.08-1-9	1988	2,485	0.62	27,007.2	2,593	9.6%	House, Driveway
26.08-1-10	1988	2,211	0.49	21,344.4	3,439	16.1%	House, Driveway, Pool
26.08-1-11	1988	2,378	0.68	29,620.8	4,084	13.8%	House, Driveway, Pool
26.08-1-12	1988	2,211	0.71	30,927.6	5,218	16.9%	House, Driveway
26.08-1-13	1988	2,383	0.47	20,473.2	3,574	17.5%	House, Driveway
26.08-1-14	1988	3,044	0.45	19,602.0	4,072	20.8%	House, Driveway
26.08-1-15	1988	2,383	0.53	23,086.8	5,450	23.6%	House, Driveway, Pool
26.08-1-16	1987	2,485	0.50	21,780.0	3,167	14.5%	House, Driveway
26.08-1-17	1987	2,564	0.69	30,056.4	6,668	22.2%	House, Driveway, Pool
26.08-1-18	1986	2,572	0.70	30,492.0	3,832	12.6%	House, Driveway
26.08-1-19	1987	3,328	0.51	22,215.6	3,813	17.2%	House, Driveway
26.08-1-20	1987	2,211	0.47	20,473.2	3,837	18.7%	House, Driveway, Pool
26.08-1-21	1987	2,589	0.56	24,393.6	10,020	41.1%	House, Driveway, Pool
26.08-1-22	1987	2,211	0.74	32,234.4	4,256	13.2%	House, Driveway
26.08-1-23	1987	2,555	0.50	21,780.0	3,302	15.2%	House, Driveway, Pool
26.08-1-24			0.66	28,749.6	0	0.0%	Deeded to Town
26.08-1-63	1987	3,423	0.70	30,492.0	4,313	14.1%	House, Driveway
26.08-1-64	1987	2,555	0.51	22,215.6	7,033	31.7%	House, Driveway, Pool
26.08-1-65	1987	2,555	0.51	22,215.6	3,235	14.6%	House, Driveway
26.08-1-66	1987	3,325	0.39	16,988.4	3,177	18.7%	House, Driveway, Pool
26.08-1-67	1987	2,616	0.32	13,939.2	3,287	23.6%	House, Driveway
26.08-1-68	1987	2,211	0.49	21,344.4	3,391	15.9%	House, Driveway
26.08-1-69	1987	2,744	0.38	16,552.8	4,135	25.0%	House, Driveway
26.08-1-70	1987	2,654	0.49	21,344.4	3,405	16.0%	House, Driveway
26.08-1-71	1987	3,604	1.25	54,450.0	7,907	14.5%	House, Driveway, Pool
26.08-1-72	1987	2,694	0.54	23,522.4	3,270	13.9%	House, Driveway
26.08-1-73	1987	3,318	0.49	21,344.4	3,895	18.2%	House, Driveway
26.08-1-74	1987	2,616	0.47	20,473.2	3,190	15.6%	House, Driveway
26.08-1-75	1987	2,616	0.42	18,295.2	2,884	15.8%	House, Driveway
26.08-1-76	1992	3,599	0.61	26,571.6	4,306	16.2%	House, Driveway

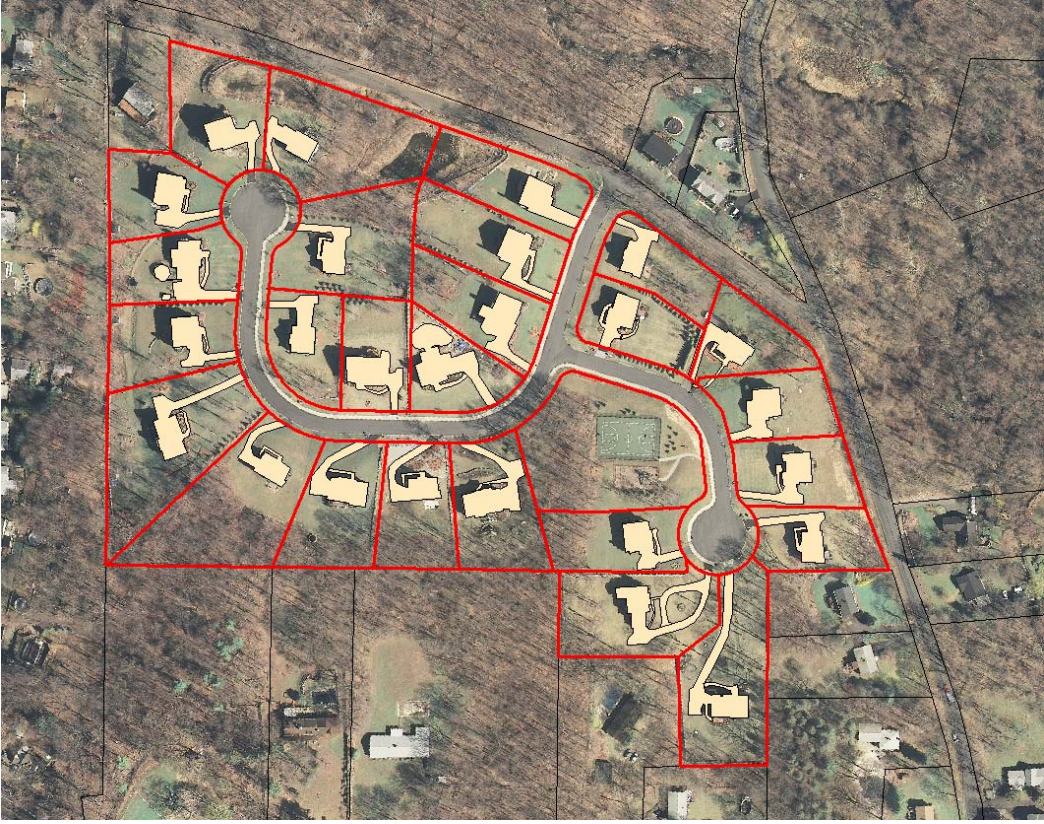
Subdivisions Built in the R1-20 Zone

26.08-1-77	1991	2,204	0.48	20,908.8	3,014	14.4%	House, Driveway
26.08-1-78	1991	2,204	0.83	36,154.8	3,090	8.5%	House, Driveway
26.08-1-79	1990	3,056	0.59	25,700.4	3,738	14.5%	House, Driveway
26.08-1-80	1990	2,812	0.54	23,522.4	4,846	20.6%	House, Driveway, Pool
26.08-1-81	1990	2,471	0.48	20,908.8	4,228	20.2%	House, Driveway
26.08-2-1			17.19	748,796.4	0	0.0%	HOA Open Space Parcel
26.08-2-2	1995	2,481	0.70	30,492.0	3,314	10.9%	House, Driveway
26.08-2-3	1996	2,699	0.48	20,908.8	4,017	19.2%	House, Driveway
26.08-2-4			0.48	20,908.8	0	0.0%	vacant
26.08-2-5	2001	2,838	0.53	23,086.8	3,370	14.6%	House, Driveway
26.08-2-6	1994	2,699	0.53	23,086.8	4,292	18.6%	House, Driveway
26.08-2-7	1995	2,785	0.58	25,264.8	7,251	28.7%	House, Driveway
26.08-2-8	1996	3,367	0.60	26,136.0	5,695	21.8%	House, Driveway
26.08-2-9	1994	2,699	0.50	21,780.0	6,119	28.1%	House, Driveway
26.08-2-10	1994	2,536	0.52	22,651.2	3,837	16.9%	House, Driveway
26.08-2-11	1994	2,873	0.56	24,393.6	7,745	31.8%	House, Driveway, Pool
26.08-2-12	1994	2,699	0.65	28,314.0	3,341	11.8%	House, Driveway
26.08-2-13	1993	2,140	0.56	24,393.6	2,821	11.6%	House, Driveway
26.08-2-14	1993	2,824	0.46	20,037.6	3,332	16.6%	House, Driveway
26.08-2-15	1992	3,116	0.46	20,037.6	3,734	18.6%	House, Driveway
26.08-2-16	1994	3,103	0.46	20,037.6	4,203	21.0%	House, Driveway
26.08-2-17	1995	2,824	0.47	20,473.2	3,781	18.5%	House, Driveway
26.08-2-18	1994	3,116	0.57	24,829.2	4,091	16.5%	House, Driveway
26.08-2-19	1993	3,496	0.54	23,522.4	8,195	34.8%	House, Driveway, Pool
26.08-2-20	1994	2,481	0.53	23,086.8	3,111	13.5%	House, Driveway
26.08-2-21	1994	2,497	0.73	31,798.8	3,658	11.5%	House, Driveway
26.08-2-22	1993	2,497	0.71	30,927.6	4,796	15.5%	House, Driveway
26.08-2-23	1990	2,824	0.53	23,086.8	4,649	20.1%	House, Driveway
26.08-2-24	1993	2,785	0.54	23,522.4	4,302	18.3%	House, Driveway
26.08-2-25	1993	2,824	0.63	27,442.8	4,594	16.7%	House, Driveway
26.08-2-26	1996	2,493	0.54	23,522.4	3,908	16.6%	House, Driveway
26.08-2-27	1996	2,481	0.52	22,651.2	3,627	16.0%	House, Driveway
26.08-2-28	1989	2,812	0.49	21,344.4	4,817	22.6%	House, Driveway
26.08-2-29	1993	2,785	0.62	27,007.2	4,854	18.0%	House, Driveway
26.08-2-30	1987	2,429	0.53	23,086.8	5,000	21.7%	House, Driveway, Pool
26.08-2-31	1988	2,533	0.47	20,473.2	3,917	19.1%	House, Driveway
26.08-2-32	1988	2,722	0.57	24,829.2	4,081	16.4%	House, Driveway
26.08-2-33	1988	2,722	0.48	20,908.8	4,552	21.8%	House, Driveway, Pool
26.08-2-34	1988	3,349	0.69	30,056.4	4,200	14.0%	House, Driveway
26.08-2-35	1988	3,041	0.75	32,670.0	7,753	23.7%	House, Driveway
26.08-2-36	1988	2,403	0.57	24,829.2	3,586	14.4%	House, Driveway
26.08-2-37	1988	2,378	0.48	20,908.8	4,468	21.4%	House, Driveway
26.08-2-38	1988	2,485	0.49	21,344.4	3,507	16.4%	House, Driveway
26.08-2-39	1988	2,722	0.50	21,780.0	4,469	20.5%	House, Driveway, Shed
26.08-2-40	1988	2,553	0.47	20,473.2	3,602	17.6%	House, Driveway
26.08-2-41	1988	2,485	0.47	20,473.2	4,599	22.5%	House, Driveway, Pool
26.08-2-42	1988	2,485	0.53	23,086.8	3,491	15.1%	House, Driveway
26.08-2-43	1988	2,553	0.53	23,086.8	3,395	14.7%	House, Driveway
26.08-2-44	1988	2,722	0.44	19,166.4	3,663	19.1%	House, Driveway
26.08-2-45	1988	2,398	0.57	24,829.2	3,490	14.1%	House, Driveway

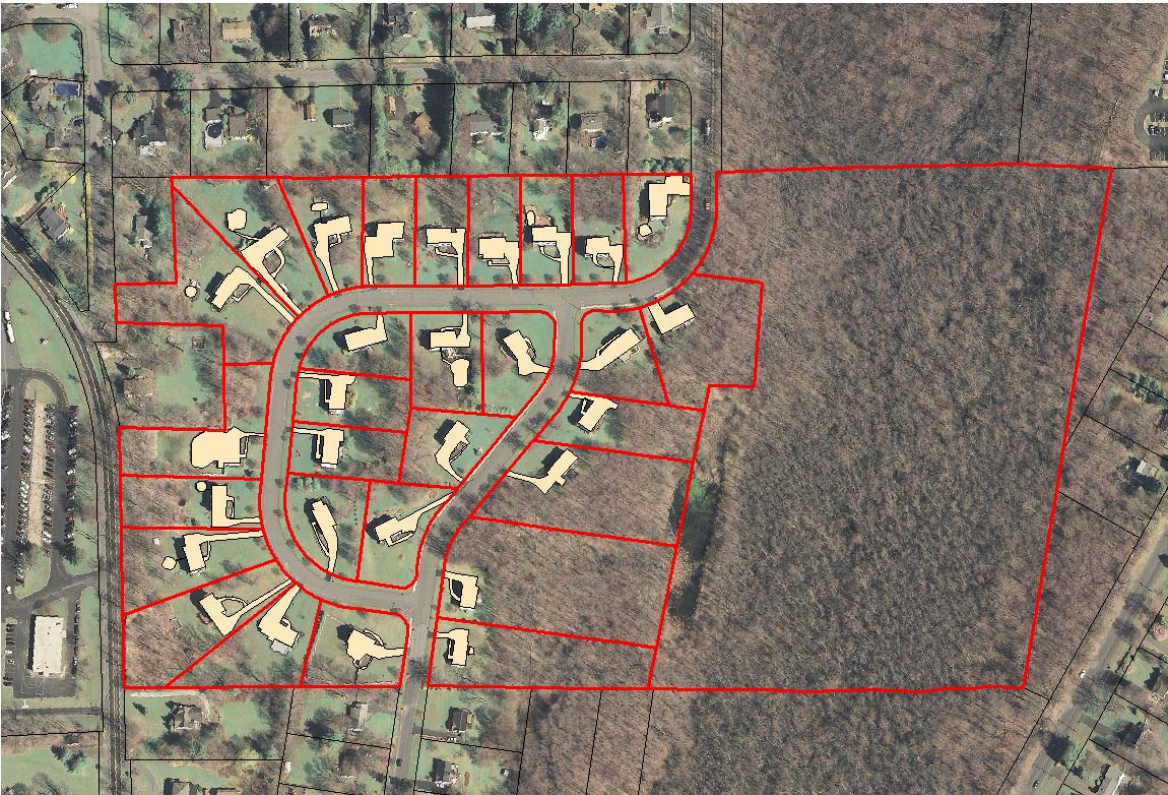
Subdivision Roads

TOTALS 84.04 3,660,782 524,140 14.3%

Madison Development



Contemporary Acres



New Hope Farm



Subdivisions Built in the R1-40 Zone

Subdivision: Fox Den
 Street: Field Street, Jordan Drive, Oscar Court, Jacob Road
 Zone: R1-40 (40,000 SF minimum)

SBL	Built	House (sf)	Lot Size (a)	Lot Size (sf)	Impervious Area (sf)	% Impervious Area	Amenities
35.12-1-5			7.93	345,430.8	0	0.0%	Playground/Open Space Parcel
36.05-2-67	1991	3,440	0.93	40,510.8	8,156	20.1%	House, Driveway, Pool
36.05-2-68	1997	4,078	0.92	40,075.2	5,100	12.7%	House, Driveway
36.05-2-69	2001	4,335	1.20	52,272.0	13,287	25.4%	House, Circular Driveway, Pool
36.09-1-2	2001	3,917	1.00	43,560.0	5,531	12.7%	House, Driveway
36.09-1-3	1995	2,838	0.93	40,510.8	4,692	11.6%	House, Driveway
36.09-1-4	1993	3,595	0.92	40,075.2	10,464	26.1%	House, Driveway, Pool, Shed
36.09-1-5	1994	3,647	0.92	40,075.2	8,953	22.3%	House, Driveway, Pool
36.09-1-6		0	0.92	40,075.2	0	0.0%	vacant
36.09-1-7	1992	3,493	0.92	40,075.2	3,937	9.8%	House, Driveway
36.09-1-8	2006	3,426	0.92	40,075.2	5,411	13.5%	House, Driveway
36.09-1-9	2007	3,667	0.93	40,510.8	4,418	10.9%	House, Driveway
36.09-1-10	2007	3,862	0.92	40,075.2	4,743	11.8%	House, Driveway
36.09-1-11	1996	4,086	0.92	40,075.2	4,860	12.1%	House, Driveway
36.09-1-12	2003	4,605	0.95	41,382.0	7,305	17.7%	House, Driveway, Patio
36.09-1-13		0	0.96	41,817.6	0	0.0%	vacant
36.09-1-14	2004	3,762	0.93	40,510.8	4,723	11.7%	House, Driveway
36.09-1-15	2004	3,394	1.01	43,995.6	5,046	11.5%	House, Driveway
36.09-1-16	2003	4,698	0.94	40,946.4	8,021	19.6%	House, Circular Driveway
36.09-1-17	2004	4,819	0.97	42,253.2	12,279	29.1%	House, Driveway, Pool
36.09-1-18	2001	4,206	0.92	40,075.2	12,670	31.6%	House, Driveway, Pool, Basketball Court
36.09-1-19	1998	3,983	0.92	40,075.2	9,053	22.6%	House, Circular Driveway, Shed
36.09-1-20	2006	4,931	0.92	40,075.2	15,678	39.1%	House, Driveway, Pool
36.09-1-21	2001	3,387	0.96	41,817.6	9,073	21.7%	House, Driveway, Pool
36.09-1-22	2004	4,467	0.94	40,946.4	8,212	20.1%	House, Driveway, Pool
36.09-1-23		0	0.93	40,510.8	0	0.0%	vacant
36.09-1-24	2002	3,849	1.11	48,351.6	12,309	25.5%	House, Driveway
36.09-1-25	1999	4,527	1.16	50,529.6	8,433	16.7%	House, Driveway
36.09-1-26	2000	4,203	1.04	45,302.4	6,782	15.0%	House, Driveway
36.09-1-27	2001	3,782	0.92	40,075.2	5,522	13.8%	House, Driveway
36.09-1-28	1998	3,705	0.92	40,075.2	5,097	12.7%	House, Driveway
36.09-1-29	2002	3,387	0.94	40,946.4	6,349	15.5%	House, Driveway
36.09-1-30		0	1.10	47,916.0	0	0.0%	vacant
36.09-1-31		0	3.90	169,884.0	0	0.0%	vacant
36.09-1-32	2002	3,256	1.06	46,173.6	3,771	8.2%	House, Driveway

TOTALS **43.78** **1,907,057** **219,875** **11.5%**

Subdivision: Dorchester Heights
 Street: Dorchester Drive
 Zone: R1-20 proposed to be R1-40

SBL	Built	House (sf)	Lot Size (a)	Lot Size (sf)	Impervious Area (sf)	% Impervious Area	Amenities
48.07-3-78	2004	3,342	0.99	43,124.4	6,049	14.0%	House, Driveway

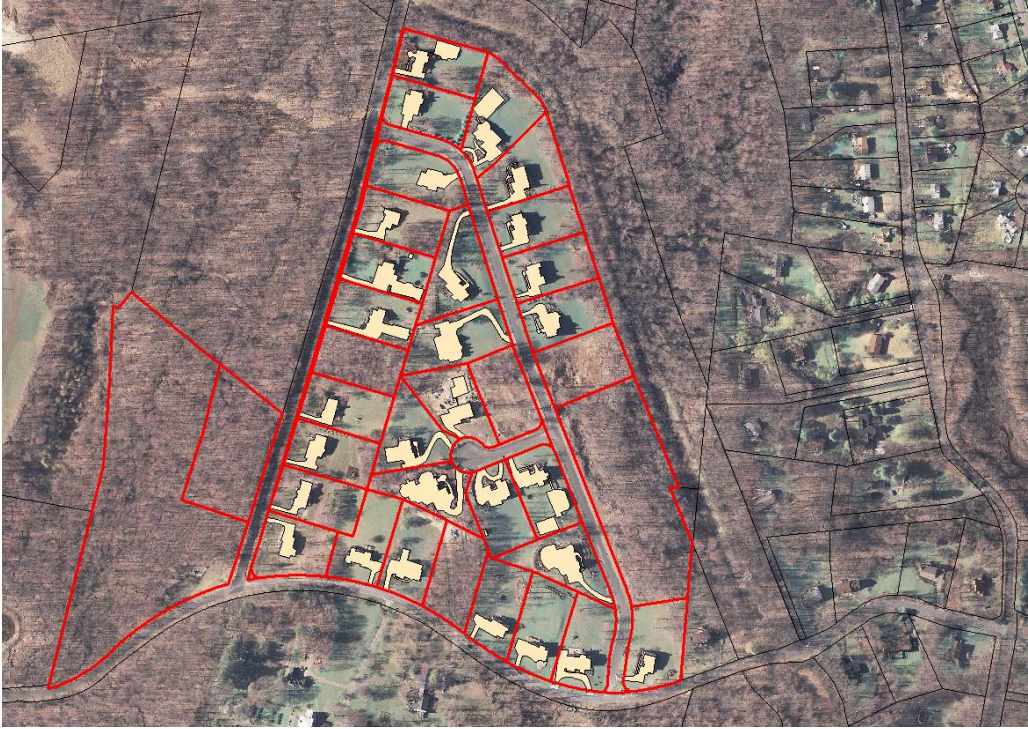
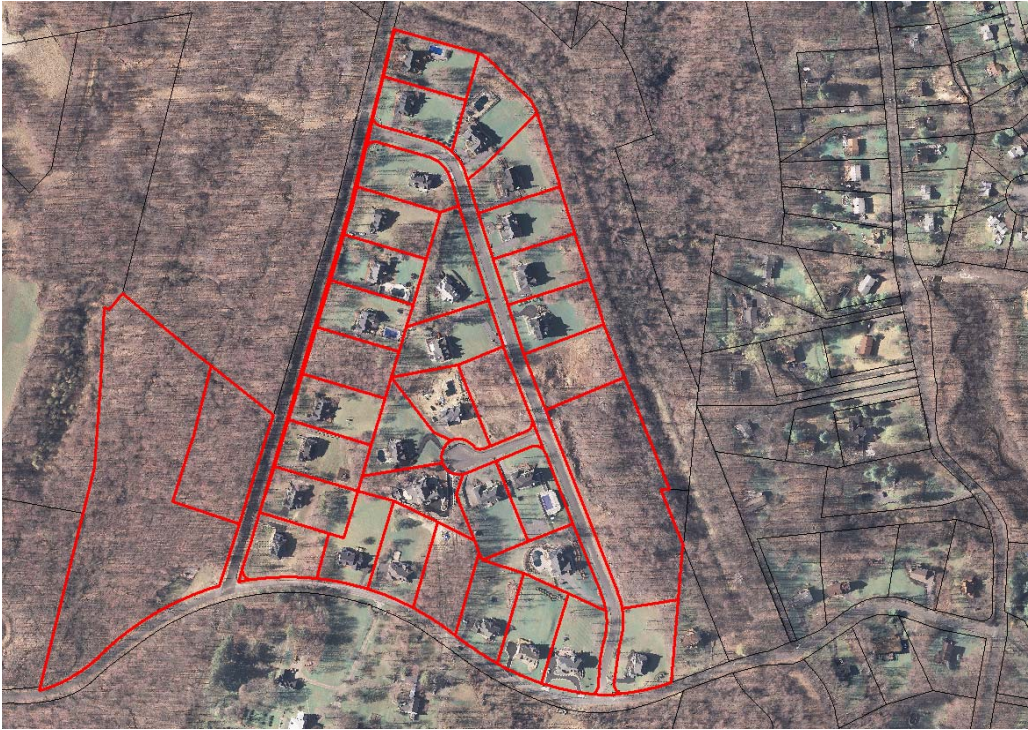
Subdivisions Built in the R1-40 Zone

48.07-3-79	2004	2,957	0.94	40,946.4	5,416	13.2%	House, Driveway
48.07-3-80	2004	3,177	0.93	40,510.8	6,339	15.6%	House, Driveway
48.07-3-81	2004	2,968	0.92	40,075.2	5,208	13.0%	House, Driveway
48.07-3-82	2004	3,575	0.92	40,075.2	6,509	16.2%	House, Driveway
48.07-3-83	2004	3,127	1.03	44,866.8	6,610	14.7%	House, Driveway, Pool
48.07-3-85	2004	3,741	0.92	40,075.2	9,052	22.6%	House, Driveway, Pool
48.11-3-68			1.98	86,248.8	0	0.0%	Rec Parcel
48.11-3-69	2005	3,962	2.84	123,710.4	8,360	6.8%	House, Driveway, Shed
48.11-3-70	2005	3,203	1.06	46,173.6	6,268	13.6%	House, Driveway
48.11-3-71	2006	4,033	2.08	90,604.8	7,365	8.1%	House, Driveway, Pool
TOTALS			78.04	636,412	67,176	10.6%	

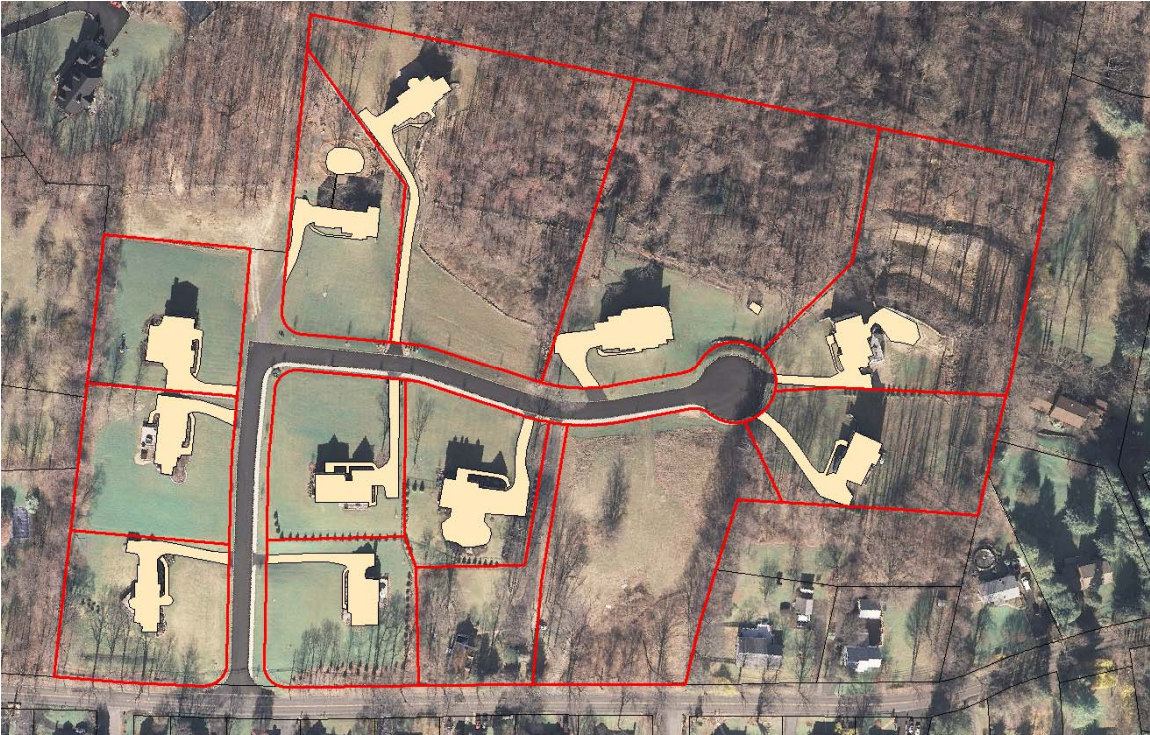
Subdivision: Deer Hollow
 Street: Deer Street, Deer Track Court
 Zone: R1-40 (40,000 SF minimum)

SBL	Built	House (sf)	Lot Size (a)	Lot Size (sf)	Impervious Area (sf)	% Impervious Area	Amenities
26.14-1-41	2000	3,378	1.45	63,162.0	5,300	8.4%	House, Driveway
26.14-1-42	2001	3,275	1.43	62,290.8	7,509	12.1%	House, Driveway
26.14-1-43	2001	3,292	1.02	44,431.2	5,893	13.3%	House, Driveway
26.14-1-44	2000	2,721	1.34	58,370.4	4,058	7.0%	House, Driveway
26.14-1-45			5.47	238,273.2	0	0.0%	Playground/Open Space Parcel
26.14-1-46	2001	3,122	1.03	44,866.8	9,439	21.0%	House, Driveway, Pool
26.14-1-47	2000	3,131	1.11	48,351.6	4,869	10.1%	House, Driveway
26.14-1-48	2000	2,721	1.07	46,609.2	4,557	9.8%	House, Driveway
26.14-1-49	2000	2,421	0.99	43,124.4	4,828	11.2%	House, Driveway
26.14-1-50	2000	3,264	0.92	40,075.2	4,512	11.3%	House, Driveway
26.14-1-51	2000	3,216	0.92	40,075.2	4,607	11.5%	House, Driveway
26.14-1-52	2000	2,721	0.92	40,075.2	4,284	10.7%	House, Driveway
26.14-1-53	2001	3,872	1.02	44431.2	5,318	12.0%	House, Driveway
26.14-1-54	2000	3,202	3.22	140263.2	10,812	7.7%	House, Driveway, Pool
26.14-1-55	2000	3,202	1.23	53578.8	6,238	11.6%	House, Driveway
26.18-1-31	2000	3,716	1.26	54885.6	9,654	17.6%	House, Driveway, Pool
26.18-1-32	2001	3,283	1.38	60112.8	6,560	10.9%	House, Driveway
26.18-1-33	2000	2,721	1.34	58370.4	4,394	7.5%	House, Driveway
26.18-1-34	2001	3,872	1.29	56192.4	9,222	16.4%	House, Driveway, Pool
26.18-1-35	2000	2,773	0.92	40075.2	5,401	13.5%	House, Driveway
26.18-1-36	2000	3,006	0.92	40075.2	5,207	13.0%	House, Driveway
26.18-1-37	2003	3,174	1.28	55756.8	4,308	7.7%	House, Driveway
26.18-1-40	2001	3,180	1.34	58370.4	5,311	9.1%	House, Driveway
TOTALS			120.82	1,431,817	132,281	9.2%	

Fox Den Estates



Dorchester Heights



Deer Hollow



Subdivisions Built in the R1-80 R1-160 Zones

Subdivision: Wooded Hill
 Street: Hog Hill Road & Wooded Hill Road
 Zone: R1-80 (80,000 SF minimum)

SBL	Built	House (sf)	Lot Size (a)	Lot Size (sf)	Impervious Area (sf)	% Impervious Area	Amenities
70.15-1-8	1998	3,563	2.41	104,979.6	11,014	10.5%	House, Driveway
70.15-1-9	1997	4,094	2.82	122,839.2	12,632	10.3%	House, Driveway
70.15-1-10	1995	4,358	1.85	80,586.0	12,030	14.9%	House, Driveway, Pool
70.15-1-11	1999	3,777	2.90	126,324.0	8,493	6.7%	House, Driveway
70.15-1-12	1999	3,352	5.62	244,807.2	13,953	5.7%	House, Driveway
70.15-1-13	1997	3,362	2.07	90,169.2	9,169	10.2%	House, Driveway
70.15-1-14	1999	4,428	2.65	115,434.0	18,814	16.3%	House, Driveway, Parking Circle
70.15-1-15	1996	3,287	1.95	84,942.0	11,629	13.7%	House, Driveway, Pool
70.15-1-16	1997	2,569	2.37	103,237.2	7,509	7.3%	House, Driveway
TOTALS			24.64	1,073,318	105,243	9.8%	

Subdivision: Lakeview Estates
 Street: Gambelli Drive
 Zone: R1-80 (80,000 SF minimum)

SBL	Built	House (sf)	Lot Size (ac)	Lot Size (sf)	Impervious Area (sf)	% Impervious Area	Amenities
47.11-1-14	2001	4,232	2.23	97,138.8	9,460	9.7%	House, Circular Driveway
47.11-1-15		0	2.32	101,059.2	0	0.0%	vacant
47.11-1-16	2000	4,511	1.91	83,199.6	8,119	9.8%	House, Driveway
47.11-1-17	1997	5,099	1.86	81,021.6	13,520	16.7%	House, Circular Driveway, Pool
47.11-1-18	2001	4,511	1.88	81,892.8	14,429	17.6%	House, Circular Driveway
47.11-1-19	1998	6,140	2.12	92,347.2	18,132	19.6%	House, Driveway, Pool
47.11-1-20	2002	4,586	2.28	99,316.8	10,886	11.0%	House, Circular Driveway, Pool
47.11-1-21			1.94	84,506.4	0	0.0%	Deeded to Town for drainage
47.11-1-22	1997	6,376	5.47	238,273.2	12,614	5.3%	House, Circular Driveway, Pool
47.11-1-23	2001	4,410	2.76	120,225.6	16,654	13.9%	House, Driveway
47.11-1-24	2002	4,220	2.02	87,991.2	21,155	24.0%	House, Circular Driveway, Pool
47.11-1-25	1998	4,577	1.84	80,150.4	8,891	11.1%	House, Driveway
47.11-1-26	1997	4,262	1.84	80,150.4	9,320	11.6%	House, Driveway, Parking Circle
47.12-1-14	2001	3,679	2.20	95,832.0	8,710	9.1%	House, Driveway
47.12-1-15	2001	3,987	2.07	90,169.2	17,092	19.0%	House, Driveway, Parking Circle, Pool, Additional Garage
47.12-1-16	1998	6,532	1.88	81,892.8	12,322	15.0%	House, Driveway
47.12-1-17	2000	3,251	1.88	81,892.8	5,704	7.0%	House, Driveway
47.12-1-18	2002	5,760	3.74	162,914.4	15,545	9.5%	House, Driveway, Parking Circle, Pool
47.12-1-19	2004	5,517	4.33	188,614.8	16,763	8.9%	House, Driveway, Parking Circle, Pool
47.12-1-20	2003	3,502	3.10	135,036.0	8,456	6.3%	House, Driveway
TOTALS			49.67	2,163,625	227,772	11%	

Subdivisions Built in the R1-80 R1-160 Zones

Subdivision: Hunterbrook Subdivision
 Street: Beekman Court
 Zone: R1-160 (160,000 SF minimum) *When approved. Zone now is R1-80 and proposed to go back to R1-160.

SBL	Built	House (sf)	Lot Size (a)	Lot Size (sf)	Impervious Area (sf)	% Impervious Area	Amenities
36.17-1-20	2001	4,156	3.67	159,865.2	15,398	9.6%	House, Driveway, Pool, Common Drive
36.17-1-21	2002	4,115	3.67	159,865.2	10,096	6.3%	House, Driveway
36.17-1-22	2003	3,545	3.67	159,865.2	11,022	6.9%	House, Driveway
36.17-1-23	2003	3,414	3.67	159,865.2	13,100	8.2%	House, Circular Driveway, Pool
36.17-1-24	2004	3,377	3.67	159,865.2	8,792	5.5%	House, Driveway, Pool
36.17-1-25	2001	3,498	3.73	162,478.8	6,981	4.3%	House, Driveway
36.17-1-26	2004	4,374	3.67	159,865.2	7,261	4.5%	House, Driveway
36.17-1-27	2003	4,042	3.67	159,865.2	13,178	8.2%	House, Driveway, Pool
36.17-1-28	2003	3,591	3.67	159,865.2	10,939	6.8%	House, Driveway
36.17-1-29	2003	3,545	3.67	159,865.2	6,953	4.3%	House, Driveway
36.17-1-30	2003	3,814	3.67	159,865.2	6,886	4.3%	House, Driveway
36.17-1-31	2002	3,245	6.17	268,765.2	6,770	2.5%	House, Driveway
47.05-1-15	2003	3,340	4.65	202,554.0	6,611	3.3%	House, Driveway
47.05-1-16	2002	3,833	4.83	210,394.8	14,476	6.9%	House, Circular Driveway, Pool, Shed
47.05-1-17			46.24	2,014,214.4	0	0.0%	Donated for Hunterbrook Linear Park
TOTALS			102.32	4,457,059	138,463	3.1%	

Wooded Hill



Lakeview Estates



Hunterbrook Subdivision



Existing Estate Style Development

Old Muldoon Estate

SBL: 70.15-1-3
Lot Size: 31.170 acres
Zone: R1-160 (160,000 SF minimum)
Street: Hog Hill Road

Total Lot Area: 1,357,765 SF
Total Impervious Improvements: 52,248 SF
% Impervious Cover 3.80%



Existing Estate Style Development

Ann Poll Farm

SBL: 70.15-1-1, 70.16-1-1
Lot Size: 64.37, 47.22
Zone: R1-160 (160,000 SF minimum)
Street: Seven Bridges Road

Total Lot Area: 2,803,957 SF
Total Impervious Improvements: 41,312 SF
% Impervious Cover 1.50%

