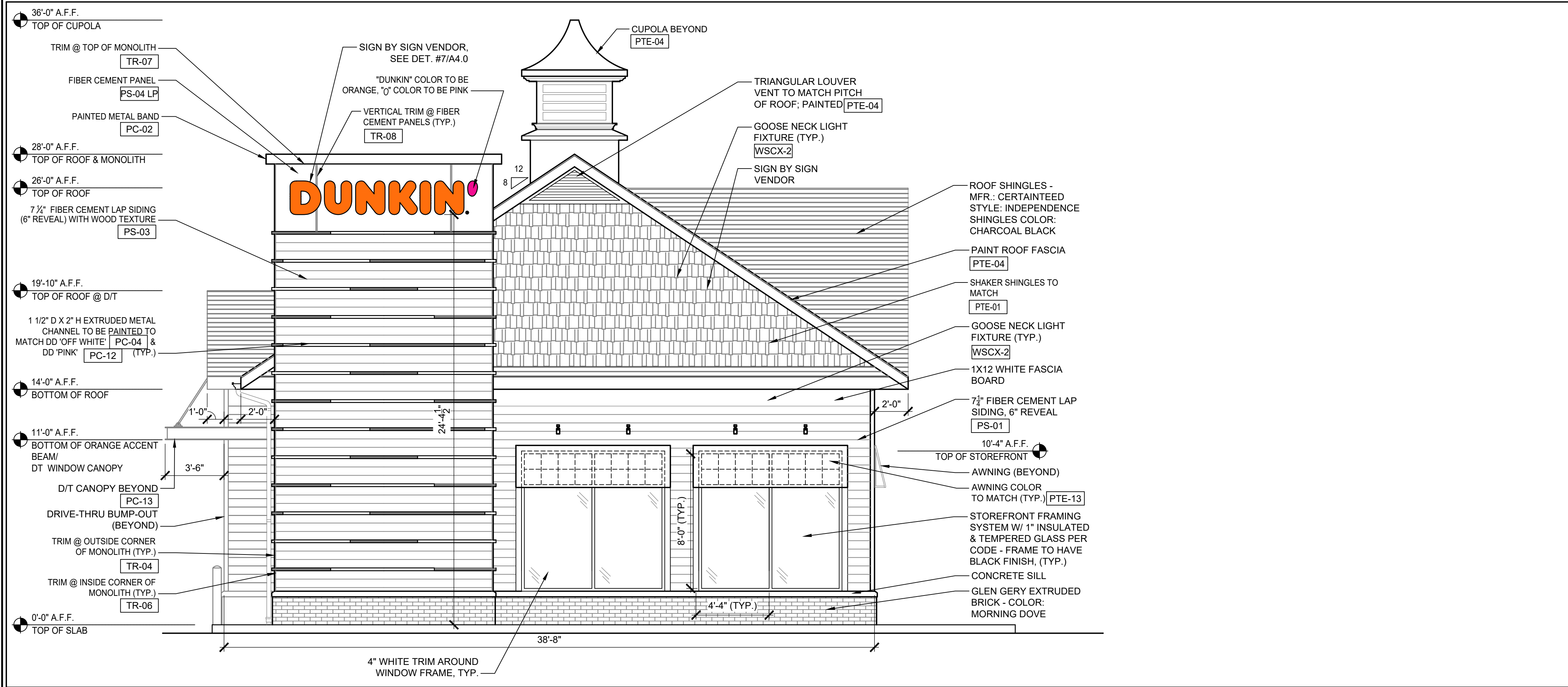


1 FRONT FACADE

1/4" = 1'-0"



2 LEFT FACADE

1/4" = 1'-0"

FINISH SCHEDULE				
EXTERIOR WALL PAINT				
CODE	MATERIAL	MANUFACTURER	PRODUCT #	DESCRIPTION / REMARKS
PTE-01	PAINT	SHERWIN WILLIAMS	GRAY FINISH	SW 7019 "GAUNTLET GRAY"
PTE-02	PAINT	SHERWIN WILLIAMS	CHARCOAL FINISH	SW 7069 "IRON ORE"
PTE-04	PAINT	SHERWIN WILLIAMS	OFF WHITE FINISH	SW 7063 "NEBULOUS WHITE"
PTE-13	PAINT		DD ORANGE	COLOR MATCH PMS 165C MAP ULTRA LOW V.O.C.
EXTERIOR FIBER-CEMENT EXTERIOR SIDING AND PANELS				
CODE	MATERIAL	MANUFACTURER	PRODUCT #	DESCRIPTION / REMARKS
PS-01	FIBER CEMENT PANEL	JAMES HARDIE	GRAY FINISH	COLOR: "AGED FEATHER" SURFACE: HARDIE SIDING OR COLOR: "PRIME FINISH" FIELD PAINT TO MATCH PTE-01 DIMENSION: 8 1/4" X 12 X 5/16" THK WITH 6" SIDING EXPOSURE
PS-03	FIBER CEMENT SIDING	WOODTONE	WOOD FINISH RUSTIC SERIES WOODTONE	COLOR: "HONEY GLAZE" WOOD PATTERN SURFACE: WOOD PATTERN PLANK DIMENSION: 8 1/4" X 12 X 5/16" THK WITH 6" SIDING EXPOSURE NOTE: NAILS TO MATCH WOOD FINISH
PS-04 LP	FIBER CEMENT PANEL	JAMES HARDIE	OFF WHITE FINISH	COLOR: "ARCTIC WHITE" SURFACE: PRE-FINISHED REVEAL PANEL DIMENSION: (81/8" X 48" X 3/8") WITH COLOR MATCHED TRIMS AND COLOR MATCHED SCREWS OR COLOR: "PRIME FINISH" FIELD PAINT TO MATCH PTE-04
EXTERIOR METAL PAINTED COATINGS				
CODE	MATERIAL	MANUFACTURER	PRODUCT #	DESCRIPTION / REMARKS
PC-13	PAINTED COATING	MATTHEWS PAINT	DD ORANGE FINISH	COLOR MATCH PMS 165C COLOR: #P7700 R161426 FINISH: LV6 SATIN V.I. OVER MFS5598 WHITE BASECOAT Blended At Sherwin Williams Product Finishes, Lowell Ma Product: LV3 - Genesis Low VOC Satin GT1039 Orange Toner 785.9g / 19gal GT1511 Low VOC Clear Gloss 539.21g / 12gal GT1043 Autumn Orange 194.04g / .95gal GT1011 Arctic White 131.29g / 5.5gal GR1088 Reducer 442.38g / 13gal GT1510 Low VOC Flat Clear 2157.21g / 45gal COLOR MATCH PMS 165C
	PAINTED COATING	SHERWIN WILLIAMS	DD ORANGE FINISH COLOR # 5659590	
	PAINTED COATING	POWDER COAT	DD ORANGE FINISH	

36 Ames Avenue
Rutherford, NJ 07070
Tel. 201.896.0333
Fax. 201.896.9469
email@gkanda.biz

Gary Kliesch and Associate Architects

Rev. No.	Drawing Issues / Revisions	Date

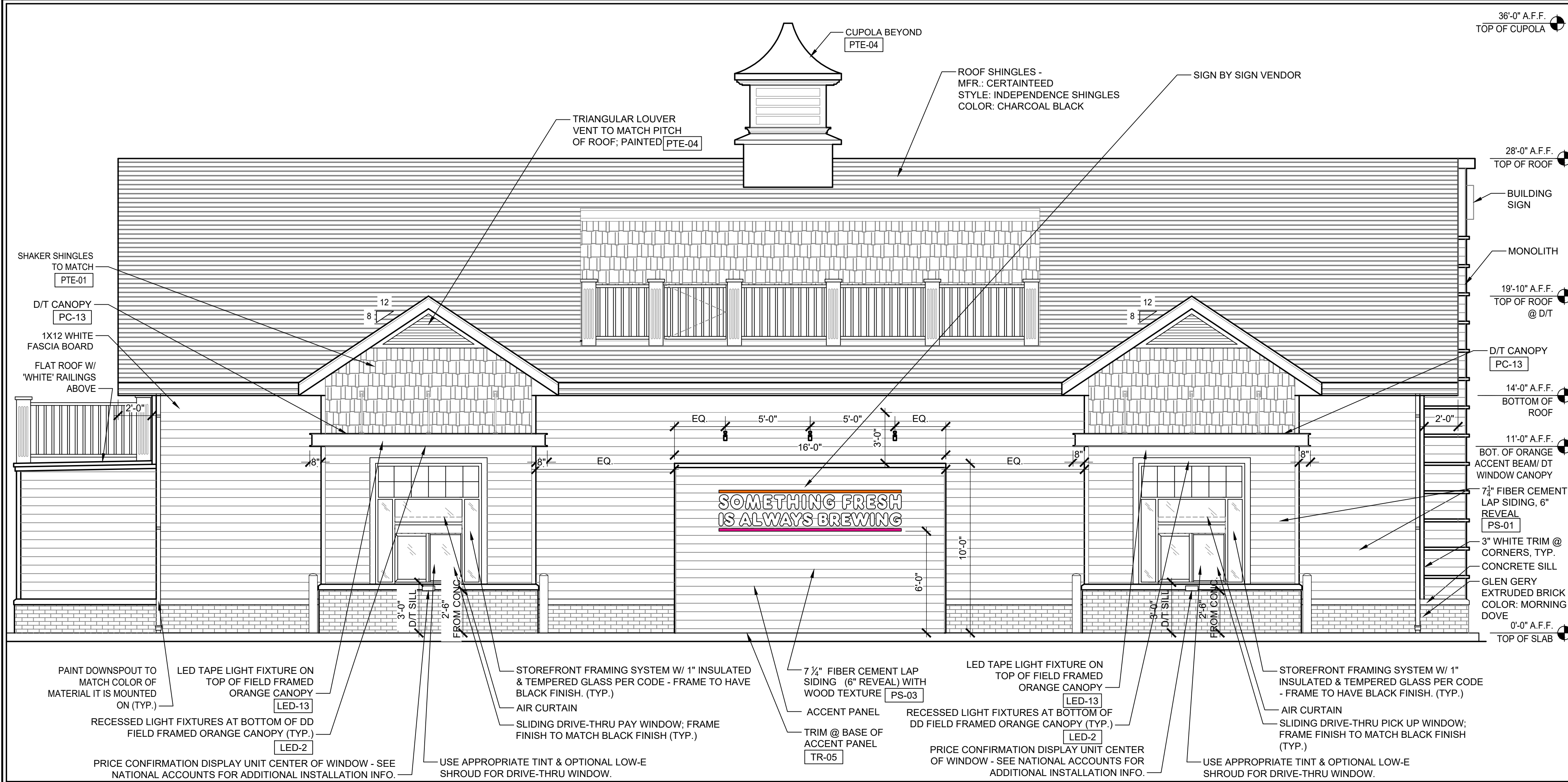
NJ: AI 13332 NJCID: 21D000202600
NY: 025618 CT: ARI 0009387
FL: AR9782 DE: SS-0007765
WI: 11180-5 MD: 14129
PA: RA-015112-B SC: 8935
D.C.: ARC101838 MA: 10610
GA: RA 013963 MI: 1301064135
VA: 401016373 IL: 001.023586
NC: 11736 WV: 4569 NH: 04487

Gary Kliesch
AIA, NCARB, NJCID

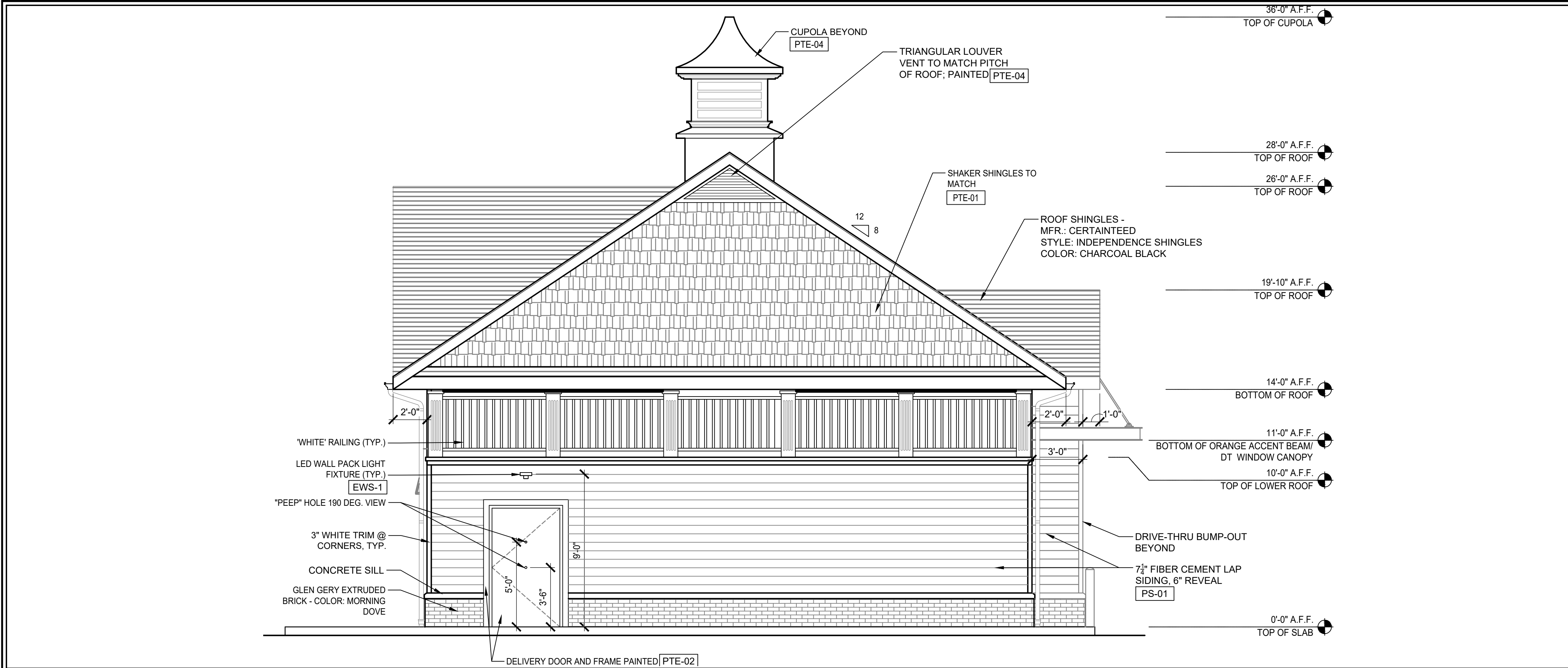
Proposed:

3735 Crompton Road
Corlandt Manor, NY 10567
PC #

Drawing Title: PROPOSED ELEVATIONS	
Date: 11/23/2022	Dwg No. A.2.0
Drawn By: GR	Checked By: DF
Job No: 22-288	2 of 4



1 REAR FACADE (@ PAY AND DRIVE THRU WINDOWS)
1/4" = 1'-0"



2 RIGHT FACADE
1/4" = 1'-0"

EXTERIOR WALL PAINT				
CODE	MATERIAL	MANUFACTURER	PRODUCT #	DESCRIPTION / REMARKS
PTE-01	PAINT	SHERWIN WILLIAMS	GRAY FINISH	SW 7019 "GAUNTLET GRAY"
PTE-02	PAINT	SHERWIN WILLIAMS	CHARCOAL FINISH	SW 7068 "IRON ORE"
PTE-04	PAINT	SHERWIN WILLIAMS	OFF WHITE FINISH	SW 7063 "NEBULOUS WHITE"
PTE-13	PAINT	DD ORANGE		COLOR MATCH PMS 165C MPP ULTRA LOW V.O.C.

EXTERIOR FIBER-CEMENT EXTERIOR SIDING AND PANELS				
CODE	MATERIAL	MANUFACTURER	PRODUCT #	DESCRIPTION / REMARKS
PS-01	FIBER CEMENT PANEL	JAMES HARDIE	GRAY FINISH	COLOR "AGED PEWTER" SURFACE HARDIE SIDING OR COLOR "PRIMED FINISH" FIELD PAINT TO MATCH PTE-01 DIMENSION: 8 1/4" X 12 X 5/16" THK WITH 6" SIDING EXPOSURE
PS-02	FIBER CEMENT SIDING	WOODTONE	WOOD FINISH RUSTIC SERIES WOODTONE	COLOR "HONEY GLAZE" WOOD PATTERN SURFACE WOOD PATTERN PLANK DIMENSION: 8 1/4" X 12 X 5/16" THK WITH 6" SIDING EXPOSURE NOTE: NAILS TO MATCH WOOD FINISH
PS-04 LP	FIBER CEMENT PANEL	JAMES HARDIE	OFF WHITE FINISH LARGE FORMAT PANEL	COLOR "ARCTIC WHITE" SURFACE PRE-FINISHED REVEAL PANEL DIMENSION: (8'11" x 48'X96") WITH COLOR MATCHED TRIMS AND COLOR MATCHED SCREWS OR COLOR "PRIMED FINISH" FIELD PAINT TO MATCH PTE-04

EXTERIOR METAL PAINTED COATINGS				
CODE	MATERIAL	MANUFACTURER	PRODUCT #	DESCRIPTION / REMARKS
PC-13	PAINTED COATING	MATTHEWS PAINT	DD ORANGE FINISH	COLOR MATCH PMS 165C COLOR: MP797700 R161426 FINISH: LVS SATIN V10 OVER MP65898 WHITE BASECOAT
PC-13	PAINTED COATING	SHERWIN WILLIAMS	DD ORANGE FINISH COLOR # 5059990	Blended At Sherwin Williams Product Finishes, Lowell MA Product: LV3 - Genesis Low VOC Satin GT1039 Orange Toner 785.07g / 19gal GT1511 Low VOC Gloss Clear 529.21g / 12gal GT1043 Autumn Orange 194.04g / .05gal GT1011 Auto White 137.20g / .02gal GR1058 Reducer 442.38g / 1.9gal GT1510 Low VOC Flat Clear 2157.21g / 49gal COLOR MATCH PMS 165C
PC-13	PAINTED COATING	POWDER COAT	DD ORANGE FINISH	

36 Ames Avenue
Rutherford, NJ 07070
Tel. 201.896.0333
Fax. 201.896.9469
email@gkanda.biz



Rev. No.	Drawing Issues / Revisions	Date

N.J. AI 13332
N.Y. 026618
FL. AR95782
WI. 11180-5
PA. RA-015112-B SC. 8935
D.C. ARC101888 MA.10810
GA. RA 013863 MI. 1301064135
VA. 401016373 IL. 001.023586
NC.11736 WV. 4568 NH.04487

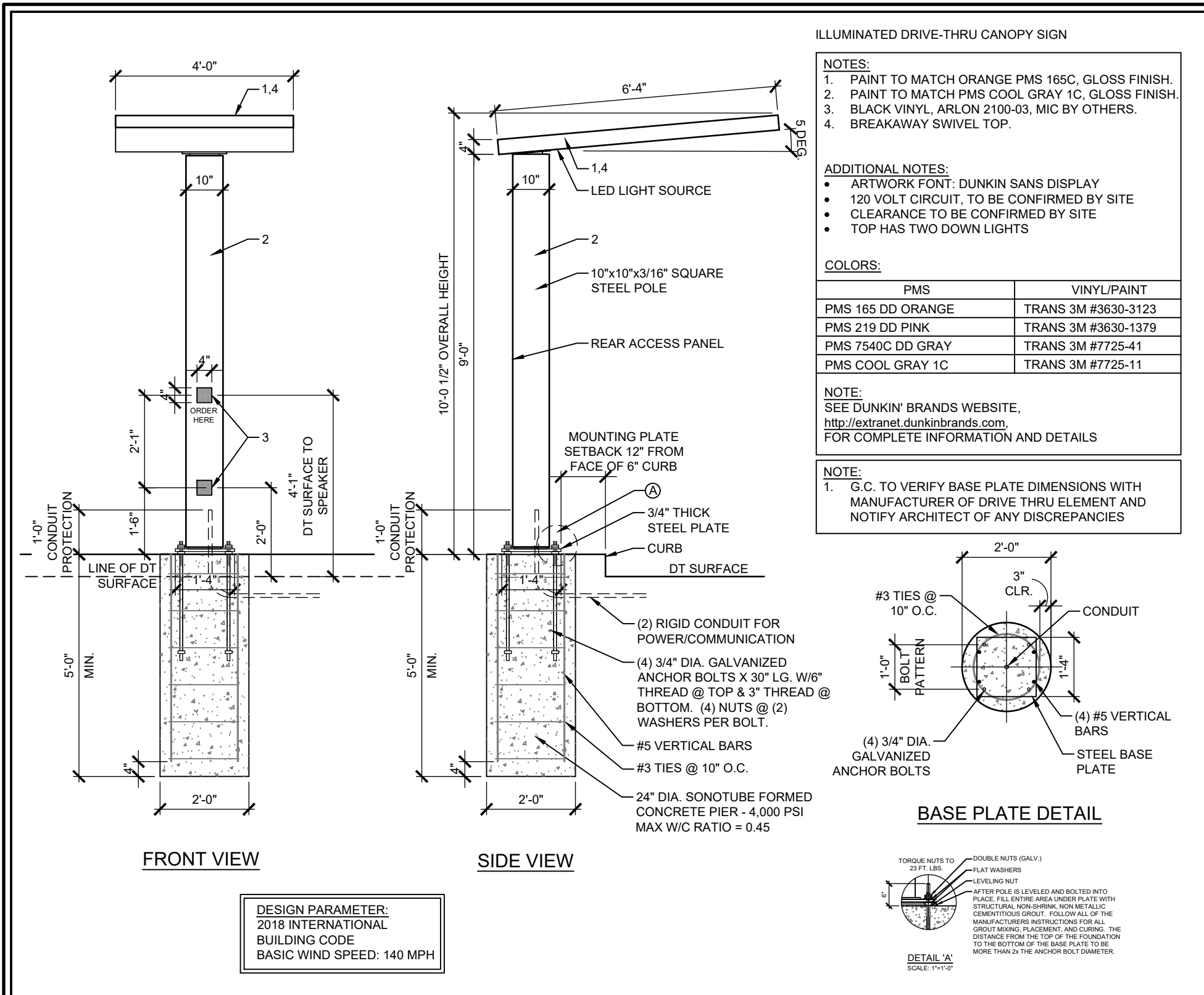
N.J.C.I.D. 21D00029000
CT. ARI.0009367
DE. SS-0007765
MD. 14129
SC. 8935
MA.10810
MI. 1301064135
IL. 001.023586
WV. 4568
NH.04487

Gary Kliesch
A.I.A., N.A.A.B., N.C.I.D.

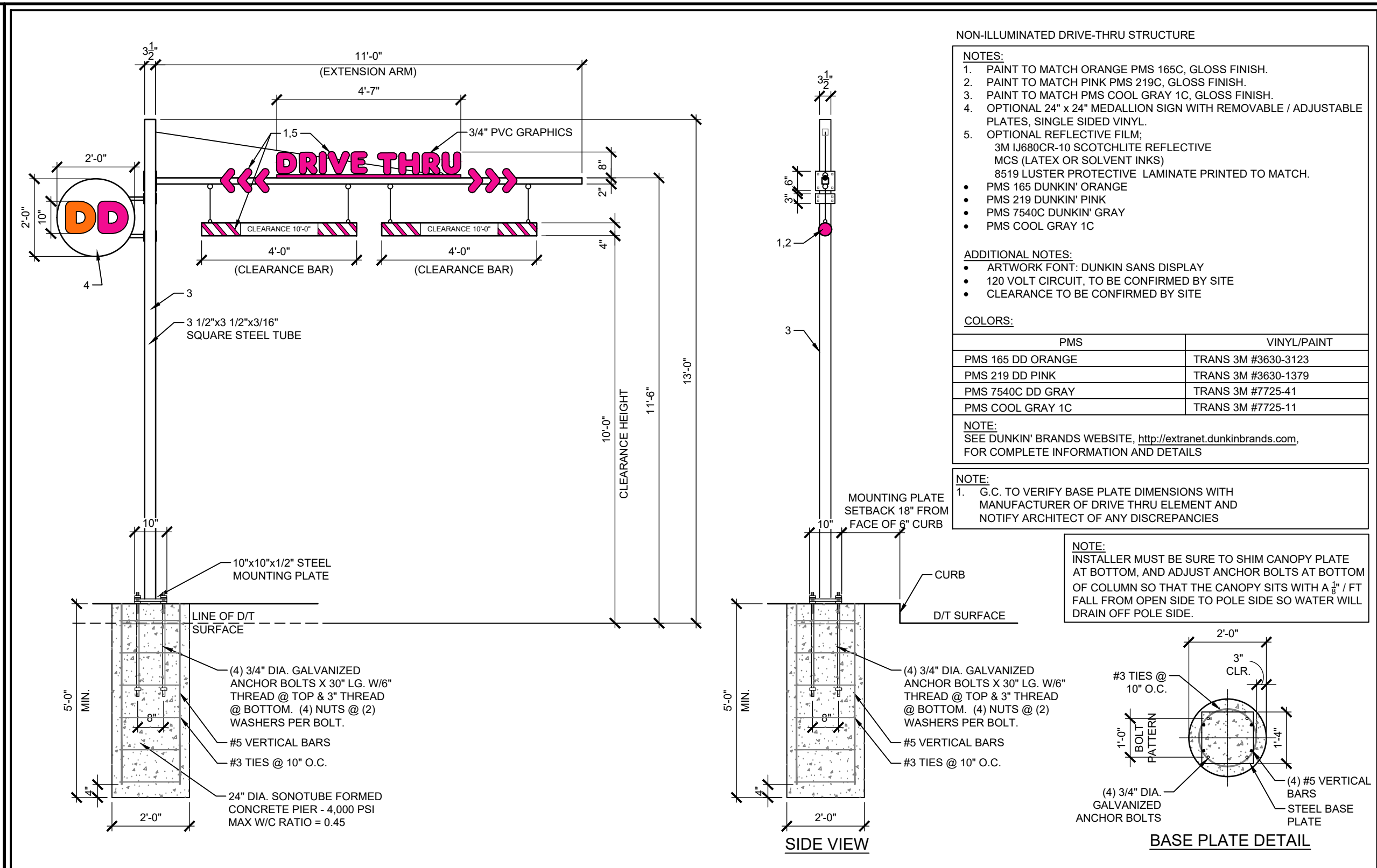
Proposed:

3735 Crompton Road
Corlandt Manor, NY 10567
PC #

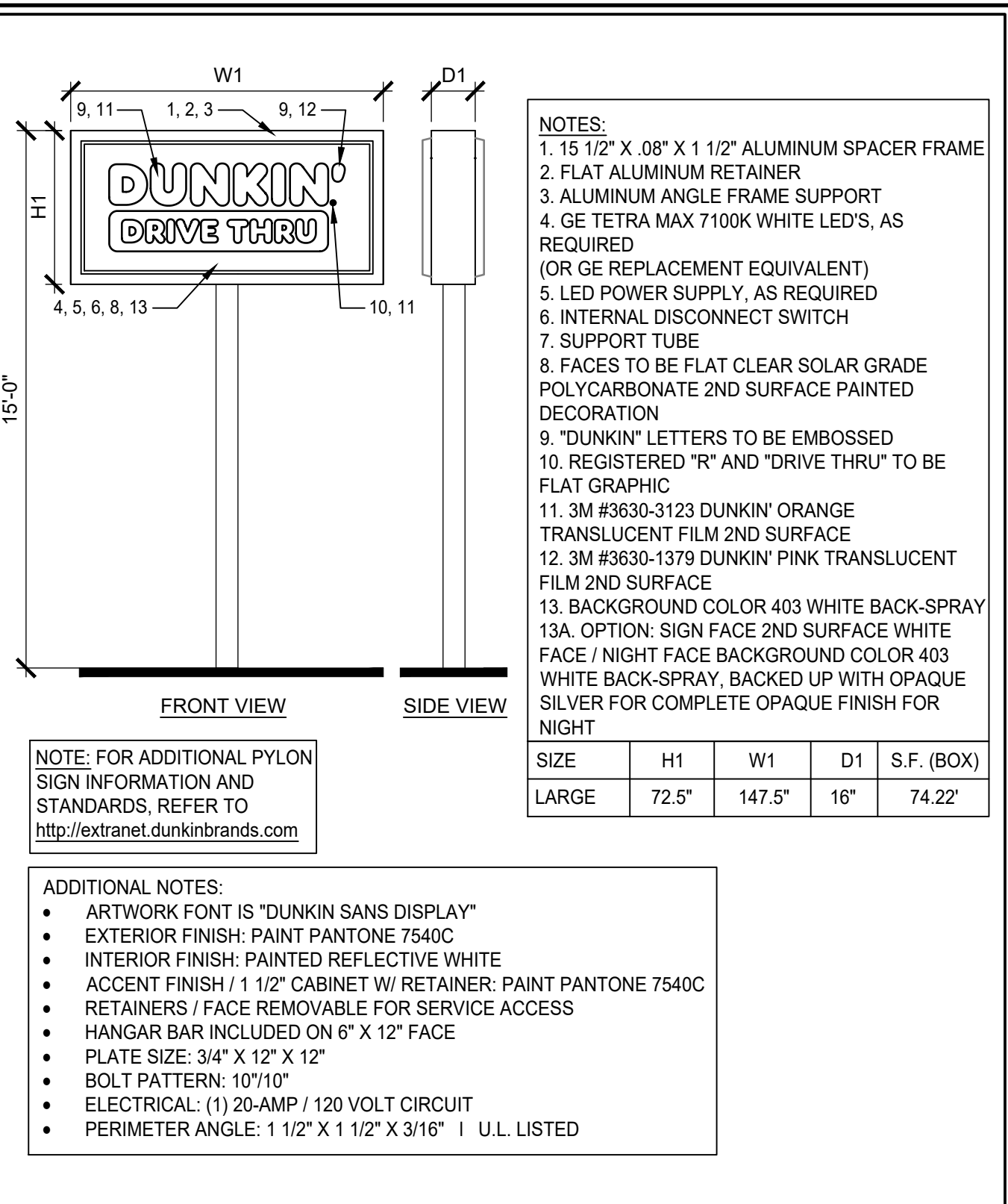
Drawing Title: PROPOSED ELEVATIONS	
Date: 11/23/2022	Dwg No. A 3.0
Drawn By: GR	Checked By: DF
Job No: 22-288	3 of 4



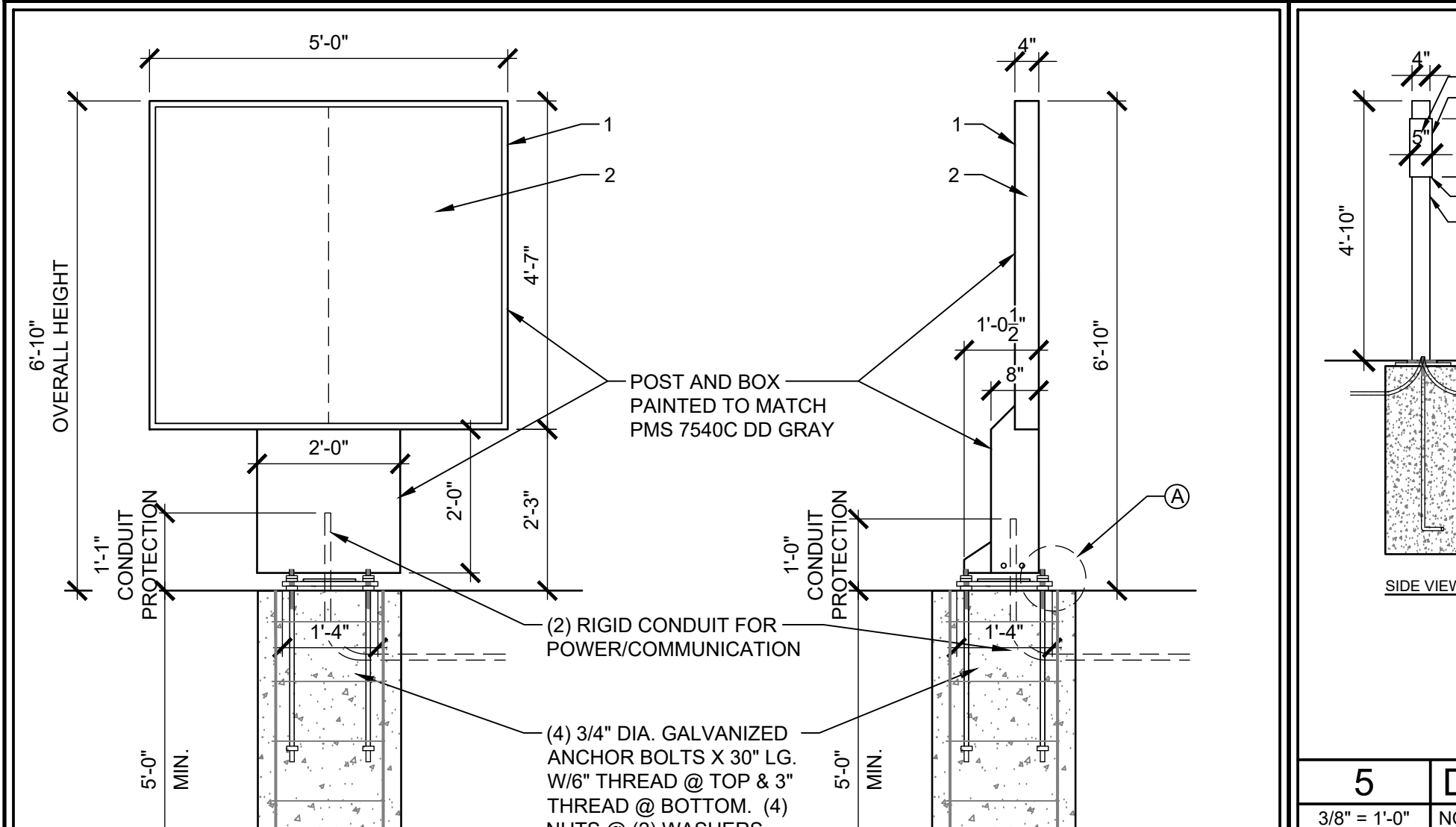
1 ORDER CANOPY
 3/8" = 1'-0" NOTE:



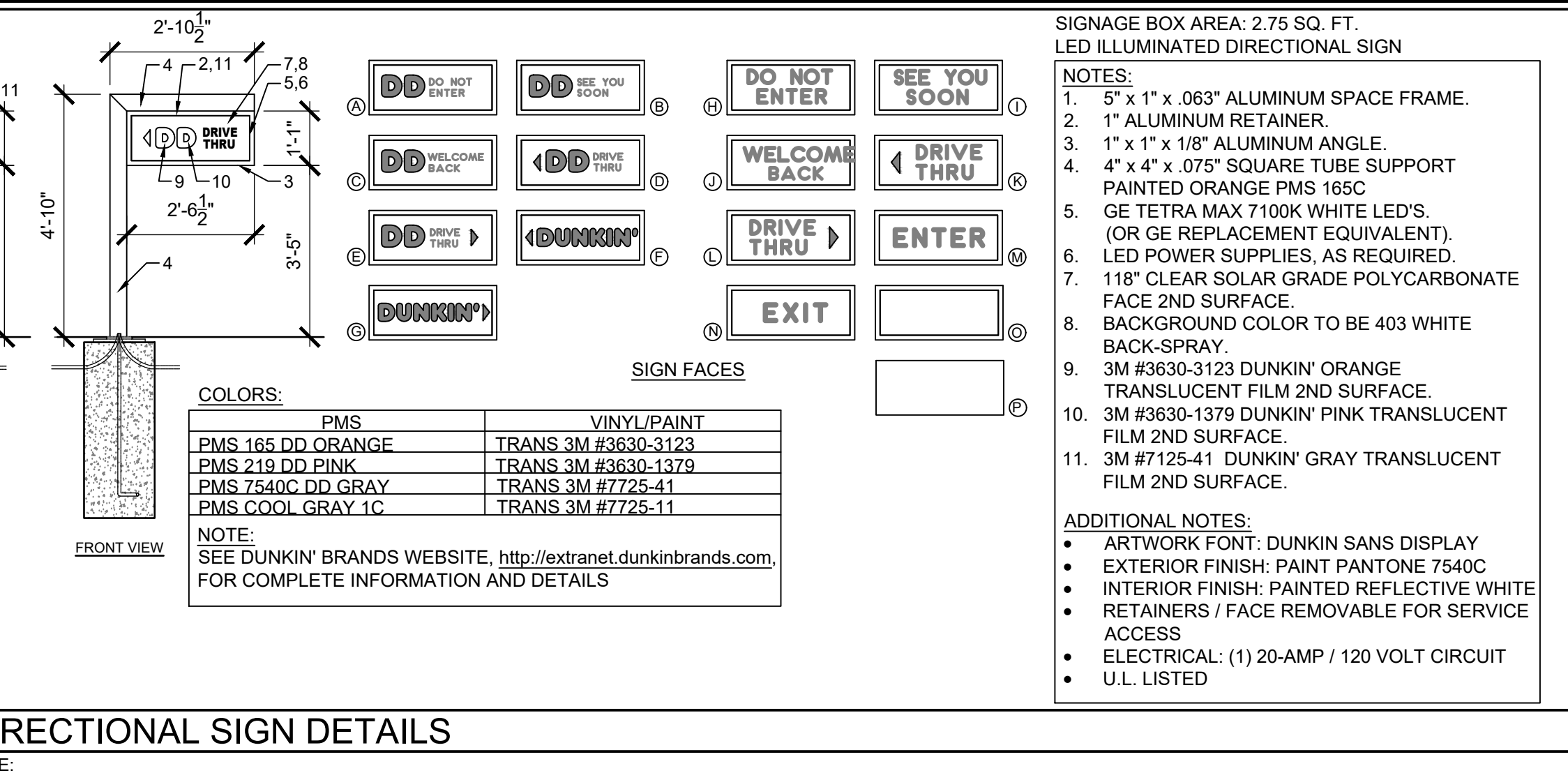
2 SINGLE VEHICLE CLEARANCE BAR DETAIL
 3/8" = 1'-0" NOTE:



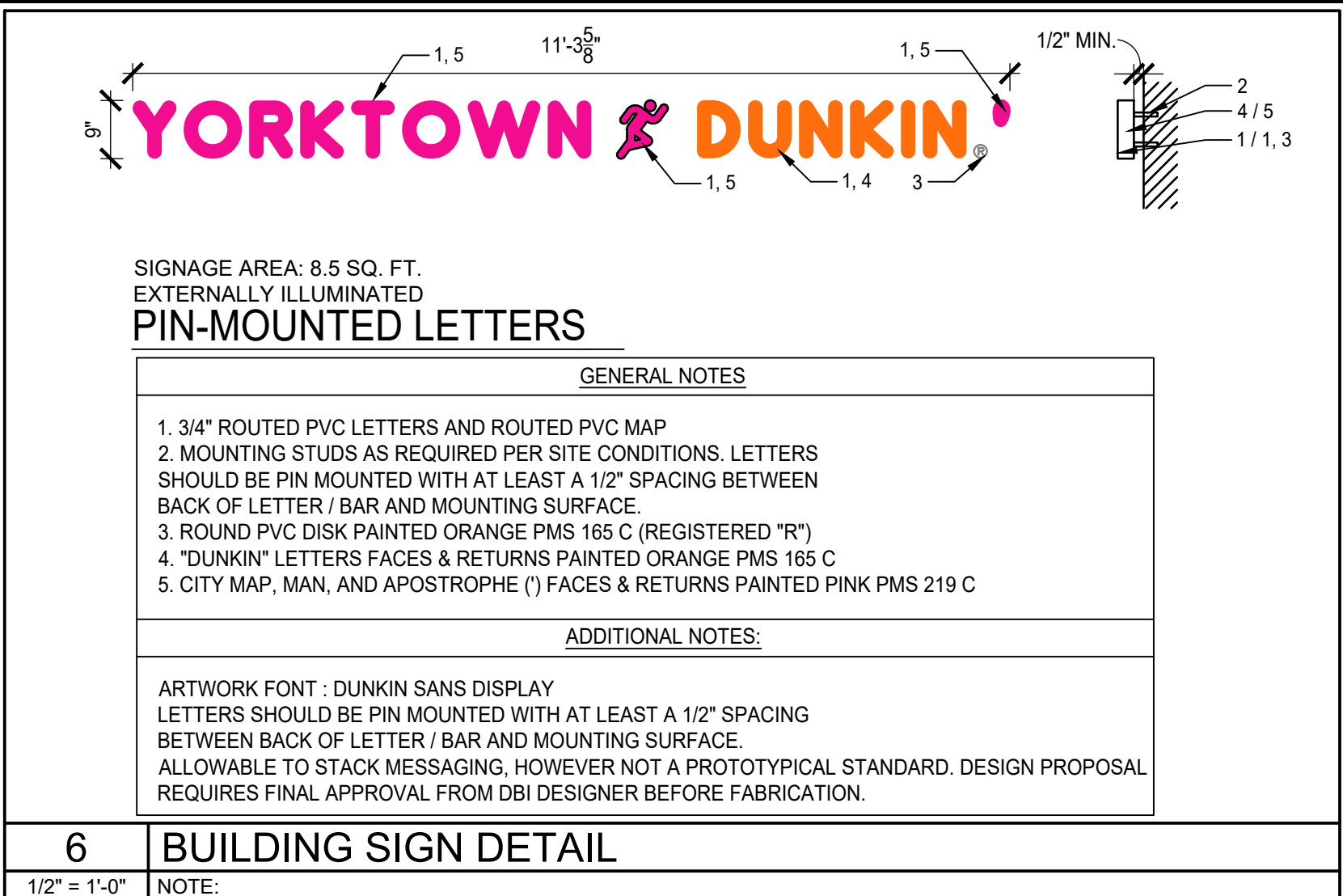
3 PYLON SIGN DETAIL
 1/4" = 1'-0" NOTE:



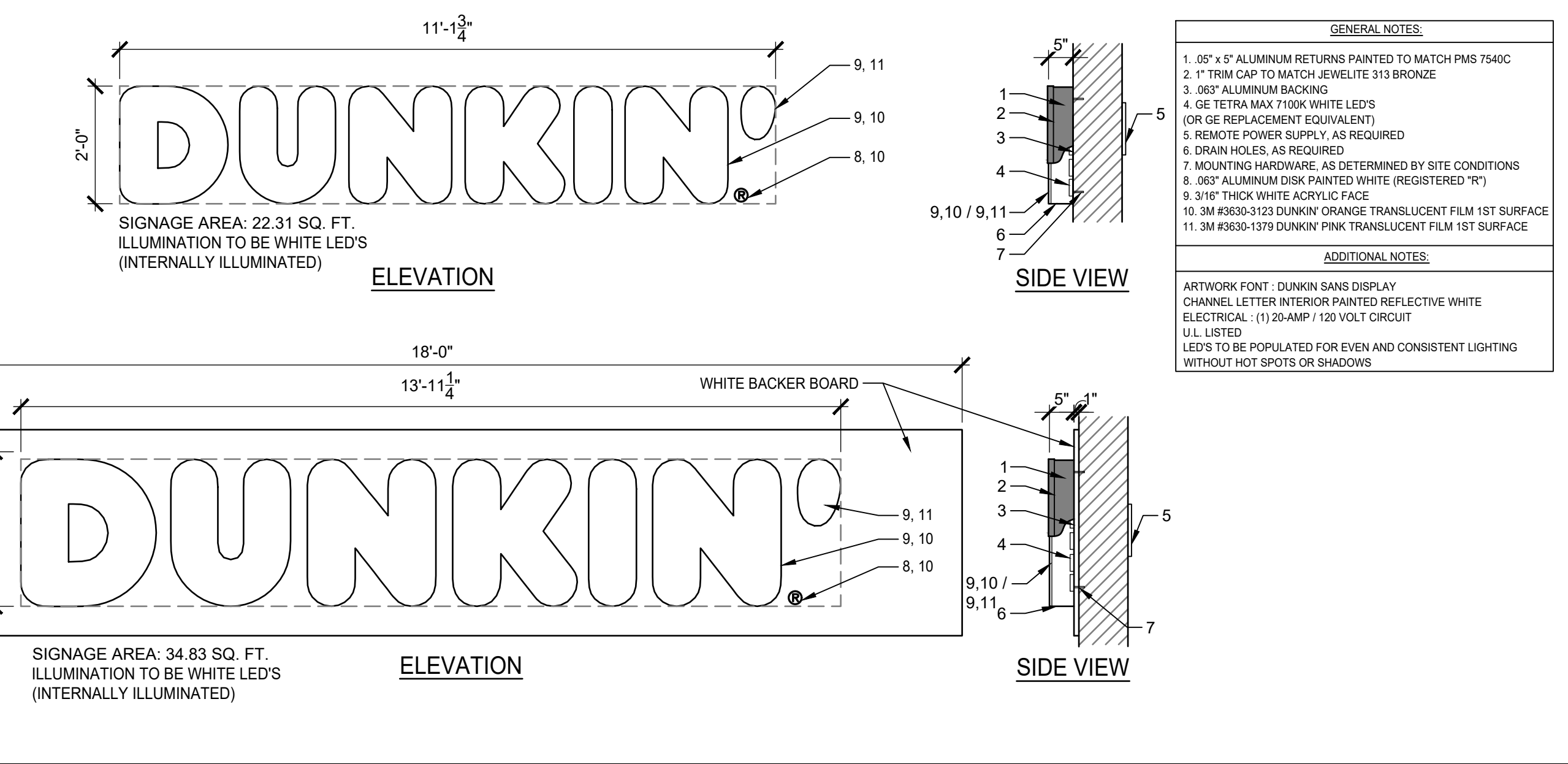
4 DIGITAL MENU BOARD
 1/2" = 1'-0" NOTE:



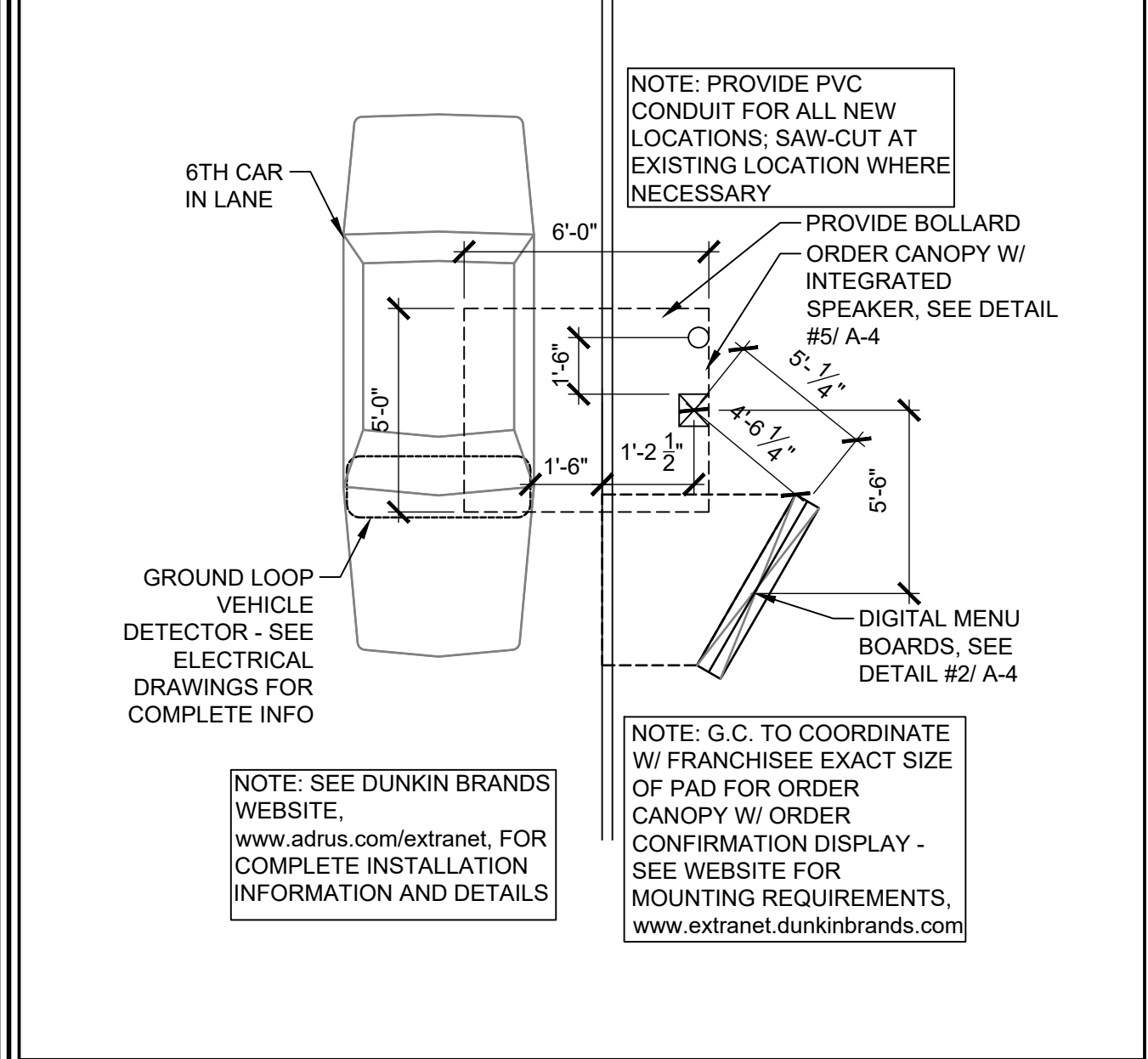
5 DIRECTIONAL SIGN DETAILS
 3/8" = 1'-0" NOTE:



6 BUILDING SIGN DETAIL
 1/2" = 1'-0" NOTE:



7 BUILDING SIGN DETAILS
 3/8" = 1'-0" NOTE:



8 DRIVE THRU MENU BOARD LAYOUT DTL.
 1/4" = 1'-0" NOTE:

36 Ames Avenue
 Rutherford, NJ 07070
 Tel. 201.896.0333
 Fax. 201.896.9469
 email@gkanda.biz

GKANDA ARCHITECTS PC

Gary Kliesch and Associate Architects

Date	Revisions

NJ: AI 13332
 NY: 028618
 FL: AR95782
 WI: 11180-5
 PA: RA-01512-B
 D.C.: ARC101828
 GA: RA-013983
 VA: 401016373
 NC: 11736

CT: ARI 0009387
 DE: SS-0007765
 MD: 14129
 SC: 8935
 MA: 10610
 MI: 1301064135
 IL: 001023586
 WV: 4569
 NH: 00487

A.I.A., N.A.A.B., N.C.I.D.

Gary Kliesch

Proposed:

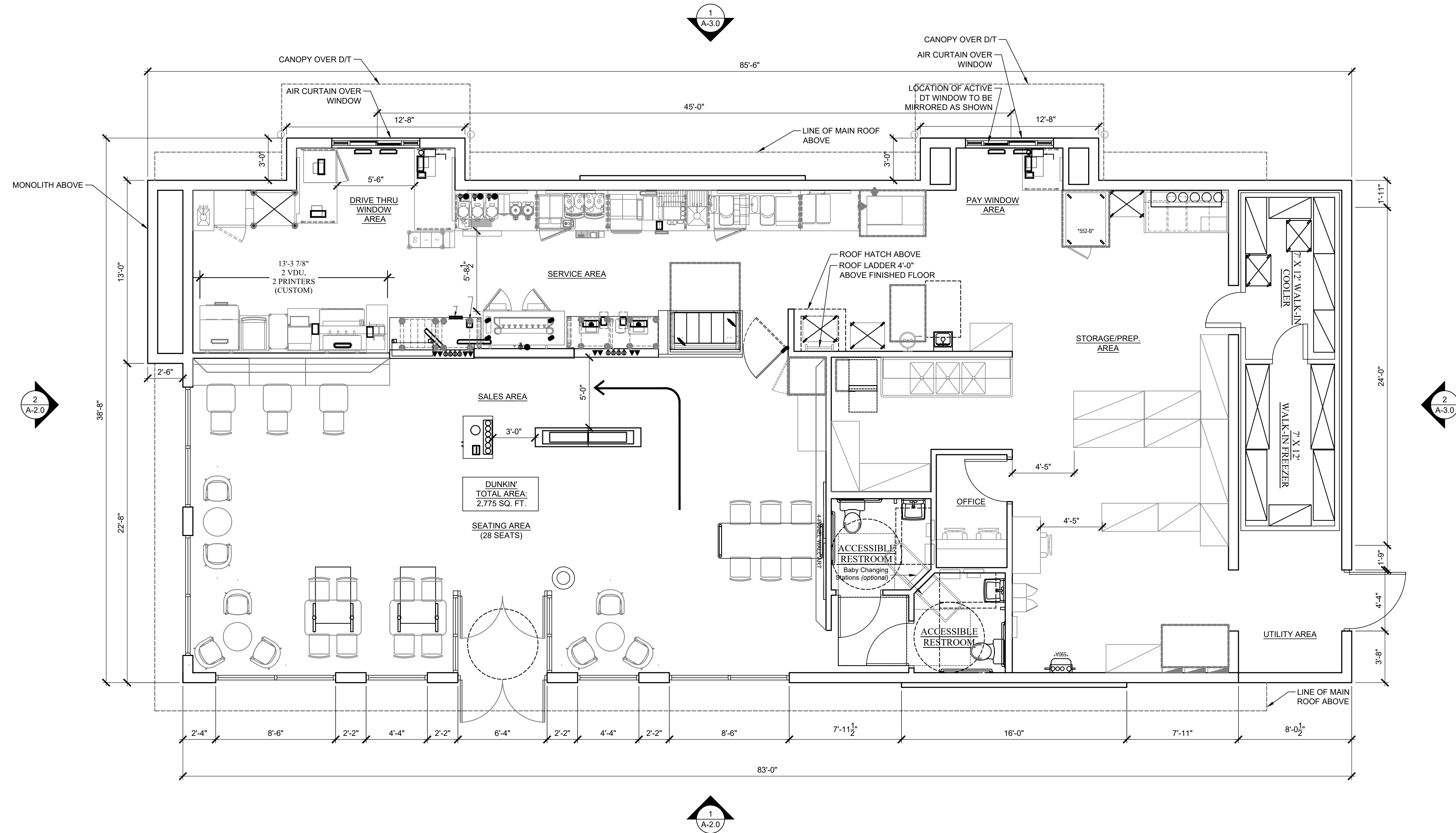
DUNKIN'

3735 Croitmond Road
 Cortlandt Manor, NY 10567
 PC#

Drawing Title:
 PYLON SIGN, SIGNAGE DETAILS,
 AND SITE ELEMENT DETAILS

Date: 11/23/2022
 Dwg No. A 4.0

Drawn By: GR
 Checked By: DF
 Job No: 22-288
 4 of 4



1 PROPOSED FLOOR PLAN
1/4" = 1'-0"

36 Arnes Avenue
Rutherford, NJ 07070
Tel. 201.896.0333
Fax. 201.896.9469
email@gkanda.biz

gkanda
ARCHITECTS PC

Gary Kliesch and Associate Architects

Rev. No.	Drawing Issues / Revisions	Date

NJ: AI 13332 NJCID: 21D00025000
 NY: 025618 CT: ARI 0009367
 FL: AR95782 DE: SS-0007765
 WI: 11180-5 MD: 14129
 PA: RA-015112-B SC: 8935
 D.C.: ARC101828 MA: 10610
 GA: RA 013963 MI: 1301064135
 VA: 401016373 IL: 001.023586
 NC: 11736 WV: 4569 NH: 04487

Gary Kliesch
A.I.A., N.A.A.R.B., N.C.I.D.

Proposed:

DUNKIN'

3735 Crompond Road
Cortlandt Manor, NY 10567
PC#

Drawing Title: PROPOSED FLOOR PLAN	
Date: 11/23/2022	Dwg No. A.1.0
Drawn By: GR	Checked By: DF
Job No: 22-288	1 of 4