

Notes:

- Nuisance and non-native vegetation will be removed from within the wetland expansion/enhancement area, as shown, including phragmites, multi-floral rose, climbing bittersweet, and allanthus. No native species will be removed. Where possible existing native trees will be preserved.
- During re-grading the work area will be isolated with silt fence. If necessary a diversion pipe will be used to convey water from the small pond south of the existing accessway to the pond to avoid siltation. Access to the work area will be from the new trail proposed along the north edge of the mitigation area. The proposed check dams and flow diverters will be placed by hand. The goal is to establish a wider flow area through the two new expansion areas, providing hydrology to a larger area while still funneling flows to the existing outlet points at the western edge of the pond.
- The site drains to a tributary of the New Croton Reservoir.
- A minimum of 13 large trees, 12 small trees and 80 shrubs will be planted to enhance the hydrophytic plant community on site as per the plant list below. Wetland seed mix will be spread over the entire area. Up to 500 herbaceous wetland plants will be planted in areas along the pond edge and where water pools on the new slope.

Planting Details

Plant choices for the wetland expansion were made according to existing site conditions and locally common species.

All planting will proceed by hand. Materials will be brought to the site in good condition (see below) and then placed in central drop locations. The materials will then be hand-carried to their planting locations and in turn, planted by hand. Only rounded, shallow planting shovels will be used in this effort.

Criteria for selecting plant material will include (1) the plant's ability to withstand the expected light and saturation conditions; (2) its demonstrated survival on this site and other nearby sites; (3) the plant must be native and non-invasive; and (4) whether the plant material is available at nurseries in the same region as the site. See table below for complete plant species list. Seed mix was chosen based on the species' ability to survive in moist areas adjacent to the road with some sun.

Planting will be done in spring or early summer (between April 1 and July 1). Shrubs may also be planted in the late summer to early fall (September 1 to October 30). In all cases, a hole will be dug twice as deep as the root ball. The only shovels allowed are rounded, shallow spades. The hole will then be backfilled with a thin layer of rich, organic topsoil, the plant placed inside, the hole backfilled to the top and then gently tamped down.

Container-grown plant material delivered to the job site will be inspected to assure moist soil/root masses. Any dry and light weight plants will not be accepted. If not planted immediately the container will be stored out of the sun and wind and kept moist (i.e., a means of watering will be provided and watering will occur daily). When removed from the containers, the plants will be the size of the specified container. If in leaf, the plants will appear healthy with no spots, leaf damage, discoloration, insects or fungus. If not in leaf, the buds will be firm and free of damage, discoloration, insects or fungus. Containers will be a minimum of quart size for shrubs and gallon size for trees.

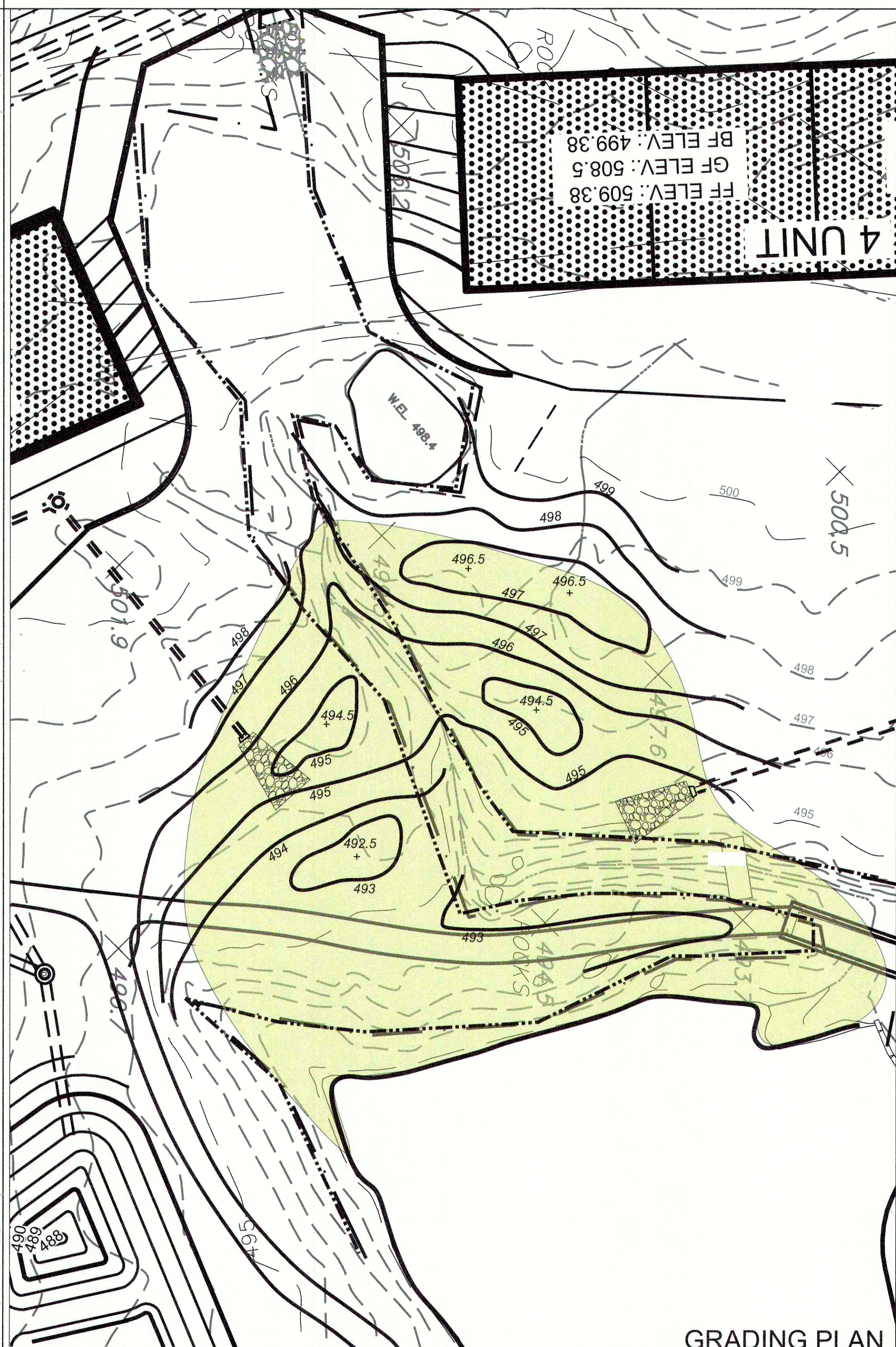
Bare roots plants will be shipped from the nursery immediately after lifting from the field and will be planted immediately upon arrival at the site. If they cannot be planted as soon as arriving at the site, they will be stored in the shade, protected from sun and wind, and kept moist by the use of straw, peat moss, compost, or other suitable materials. Plants not having an abundance of well developed terminal buds on the leaders and branches will be rejected. The stems and branches of all plants will be turgid and the cambium healthy or the plants rejected. Any bare root plants that are in leaf or have leaflets will be rejected.

Deer repellent will be used for the first growing season, with shrub masses being enclosed in deer fencing as appropriate. Extent of deer fencing may increase if browsing becomes a serious issue after the first growing season.

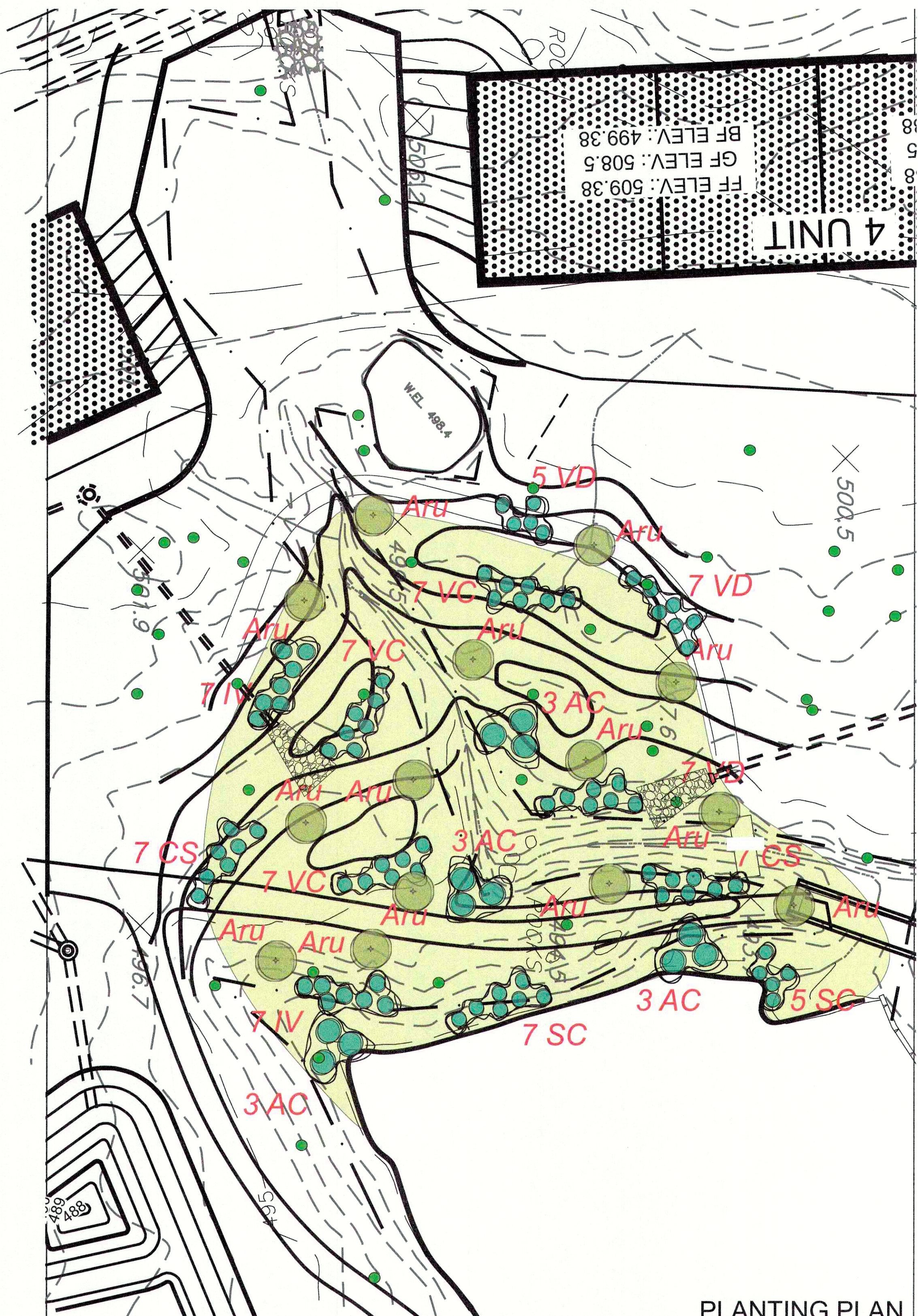
Monitoring and Maintenance

At least one pre-construction meeting will occur between the chosen grading and/or planting contractor/subcontractor and the site environmental monitor prior to beginning construction on site. The construction monitor will have experience in wetland construction and a Bachelor of Science degree in Natural and/or Physical Resources.

Monitoring and maintenance efforts for the mitigation plantings will take place over a three year period following construction. This will include monthly visits for the first growing season, and then twice a year for the next two years, with additional inspections as required depending on conditions. Invasive species will be cut as observed during these routine site visits. The applicant's environmental monitor will conduct a survey of the site and site conditions will be noted and adjusted as necessary. An annual report will be provided to the Town Wetland Inspector at the end of the growing season for each of the three years.



GRADING PLAN



PLANTING PLAN

Invasive Species Monitoring and Control Program

Japanese barberry, oriental bittersweet, *Phragmites australis* and multiflora rose are all noted as present within and adjacent to the wetlands on the project site. These invasive species favor areas of disturbed soils and edge areas. This plan will implement an invasive species monitoring and manual control program for the duration of construction and development of the project. It has been designed to carry over into the needed maintenance plans that will need to be developed and implemented by the Project Owner.

Those areas of the site that are closest to the existing wetlands and watercourses have been disturbed and re-graded over the years. These are the portions of the site that are known to support invasive species which are altering the character of the wetlands and adjacent areas and represent a long term risk to the native vegetative community.

By controlling exotic vegetation, and reducing deer populations due to increased human activity on the site, nearby native plants will have less competition and therefore have more resources available for their own growth. An invasive species monitoring and control program will be implemented at the project site as part of the overall development plan. Species targeted for removal include the following:

- Tree-of-heaven (*Ailanthus altissima*)
- Multiflora rose (*Rosa multiflora*)
- Mugwort (*Artemisia vulgaris*)
- Autumn olive (*Elaeagnus umbellata*)
- Garlic mustard (*Alliaria petiolata*)
- Purple loosestrife (*Lythrum salicaria*)
- Common reed (*Phragmites australis*)
- Oriental bittersweet (*Celastrus orbiculatus*)
- Porcelainberry (*Ampelopsis brevipedunculata*)
- Japanese Barberry (*Barberis thunbergii*)
- Japanese Stilt Grass (*Microstegium vimineum*)
- Winged Euonymus (*Euonymus alatus*)

The above listed species and all other invasive non-native plants that are detrimental to the ecology of the project site will be removed during site development to the extent practicable. The goal of this program is to reduce the presence of exotic/invasive species to a threshold of less than ten percent total cover within the areas shown on the Wetland Restoration and Buffer Enhancement Plan (the "Plan"). A qualified biologist/botanist will supervise the removal of invasive species. Invasive species can be removed in several ways, depending on the location and species of the plant:

- If a shrub is isolated and does not have its root system entwined with other plants, it may be removed mechanically. As much of the root system as possible should be removed to prevent the possibility of the invasive plant sprouting from root pieces left behind.
- If a shrub is growing amongst other native plants in a way that uprooting it may disturb surrounding native plants warranting preservation, the plant may be most safely and effectively removed by chemical means. To remove by chemical means, the plant shall first be cut back to a few stubs and stumps, about twelve inches from the base. An EPA approved solution of glyphosate (Round-up or equivalent) shall be painted on the ends of the stumps. This technique shall be applied in the early fall months before the onset of plant dormancy. Proper notification must be made prior to the application of all restricted pesticides, and application made by a licensed applicator. If required, during project construction, glyphosate will only be applied by a licensed herbicide applicator, as coordinated with the Environmental Site Monitor. Only hand-cutting and removal will be allowed within the Wetland Controlled Area.
- Highly invasive groundcovers, such as Japanese honeysuckle, are difficult to eliminate due to their habit of rooting along the stem. Groundcovers of this type will be removed by hand or mechanically. If after the second year of treatment the species persists, it may be sprayed with glyphosate, using a very close and targeted application during the active growing season. If the plant is growing among other herbaceous or shrub material that would be harmed by spraying, the glyphosate shall be applied by brush or mechanical removal should be considered. Repeated treatments may be necessary to remove the plant completely.
- Highly invasive annuals, such as garlic mustard, are difficult to eliminate due to their growth from seed that is widespread among the soil seed bank where the plants are found. Several methods may be utilized in removing this type of invasive plants. If the species is growing densely without other plants, the area will be sprayed with glyphosate during the active growing season, following the manufacturer's recommendations. Species will also be removed by hand. Both methods should be performed before plants set seed. Both methods shall be performed multiple times over a season and possibly over several seasons to completely eradicate the target species.

Monitoring and Maintenance Schedule

Following development of the site, a maintenance plan will include the regular inspection of undisturbed areas as shown on the Plan, and removal of these species as necessary. This represents the transitional areas that are most susceptible to opportunistic settling of invasive species. It is anticipated that a schedule of inspections three times a year for the first three years following full project build out (early, mid and late growing season) will be adequate for the identification and removal of the invasive species in this area.

The Town Building Inspector and Wetlands Inspector will be consulted prior to the proposed removal of invasive species within the controlled area. In addition, all activities related to invasive species control, monitoring and assessment of achievement of the 10 percent tolerance threshold for coverage by all invasive species on the project site will be coordinated with the Environmental Site Monitor. These inspections will include the mapping and identification of locations and extent of cover of invasive species, and identify the methods to be used for the subsequent removal. Following treatment, a brief report outlining extent, location and removal method for each species shall be prepared and filed with the Town Planning Office.

Plant species selection for wetland creation and enhancement areas:

- 14 Winterberry holly - *Ilex verticillata* (IV)
- 19 Arrowwood - *Viburnum dentatum* (VD)
- 21 Highbush blueberry - *Vaccinium corymbosum* (VC)
- 12 Elderberry - *Sambucus canadensis* (SC)
- 12 Red maple - *Acer rubrum* (Aru)
- 12 Shadblow - *Amelanchier canadensis* (AC)
- 14 Redosier dogwood - *Cornus sericea* (CS)

All shrubs to be in 3 to 5 gallon containers.
 Trees to be in 15 gallon containers.

- Herbaceous plugs
- 200 Soft rush - *Juncus effusus*
 - 200 Tussock sedge - *Carex stricta*
 - 200 Fringed sedge - *Carex crinita*
 - 200 Rice cutgrass - *Leeria ozzyroides*
 - 200 Joe-pye weed - *Eupatorium maculatum*

Seed mix - ERNST ERNMX-122 FACW Wetland Meadow
 Mix or equivalent - applied at 20 lbs/acre



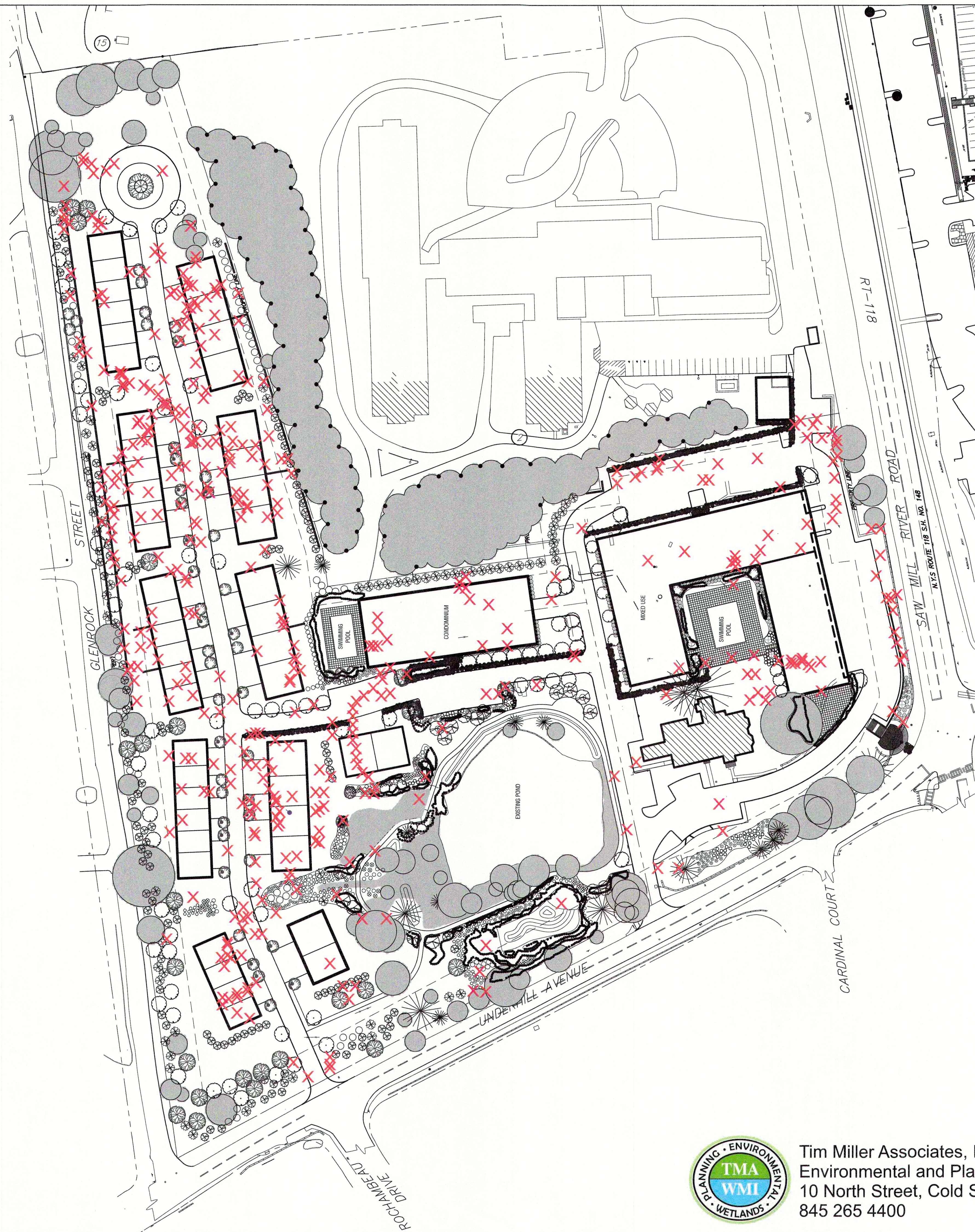
Tim Miller Associates, Inc.
 Environmental and Planning Services
 10 North Street, Cold Spring, NY
 845 265 4400

APPROVED
 Resolution Number - 23-13
 Date - July 17, 2023

WETLAND MITIGATION PLAN
UNDERHILL FARMS

Underhill Avenue
 Yorktown Heights, NY

- June 6, 2024
- July 11, 2023
- May 1, 2023



Data Sources:
 "Preliminary Landscape Plan", Blades and Goven Landscape Architects
 "Tree Removal Plan", Site Design Consultants
 "Tree Survey prepared for Unicorn Soundview LLC" by Badey and Watson Engineering and Surveying

X - Existing tree to be cut

Total Number of Existing Trees - 714
 Total Number of Protected Trees - 603
 Protected Trees to be Removed - 402
 Protected Trees to Remain - 201
 Non-Protected Trees to Remain - 19
 New Trees to be Planted - 336

APPROVED
 Resolution Number 23-13
 Date July 17, 2023

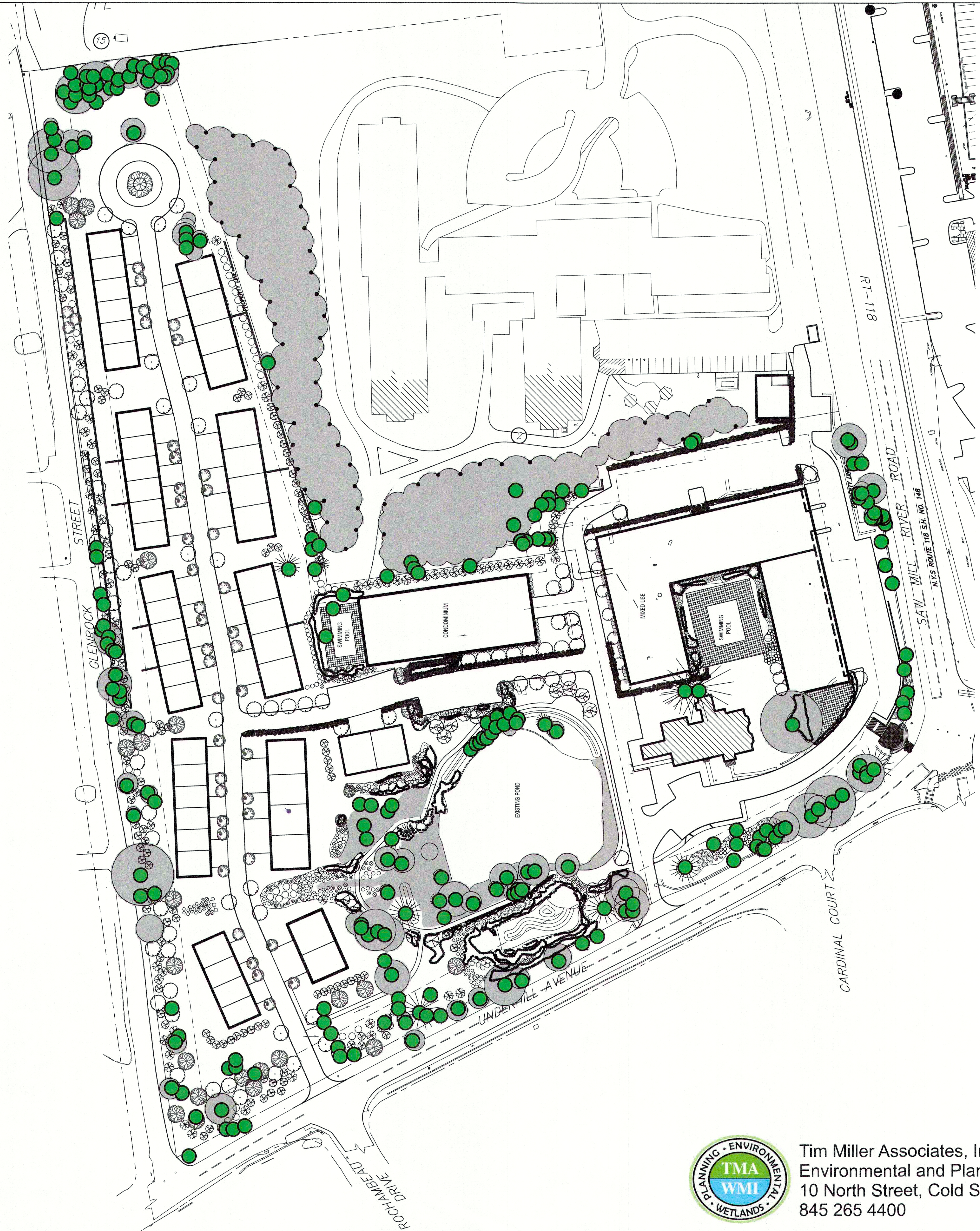
See Sheet 5 for listing of individual trees to be saved or removed.



Tim Miller Associates, Inc.
 Environmental and Planning Services
 10 North Street, Cold Spring, NY
 845 265 4400

Existing Trees to be Removed
UNDERHILL FARMS

Underhill Avenue
 Yorktown Heights, NY



Data Sources:
 "Preliminary Landscape Plan", Blades and Goven Landscape Architects
 "Tree Removal Plan", Site Design Consultants
 "Tree Survey prepared for Unicorn Soundview LLC" by Baley and Watson Engineering and Surveying

● - Existing tree to remain

Total Number of Existing Trees - 714
 Total Number of Protected Trees - 603
 Protected Trees to be Removed - 402
 Protected Trees to Remain - 201
 Non-Protected Trees to Remain - 19
 New Trees to be Planted - 336

APPROVED
 Resolution Number 23-15
 Date July 17, 2023

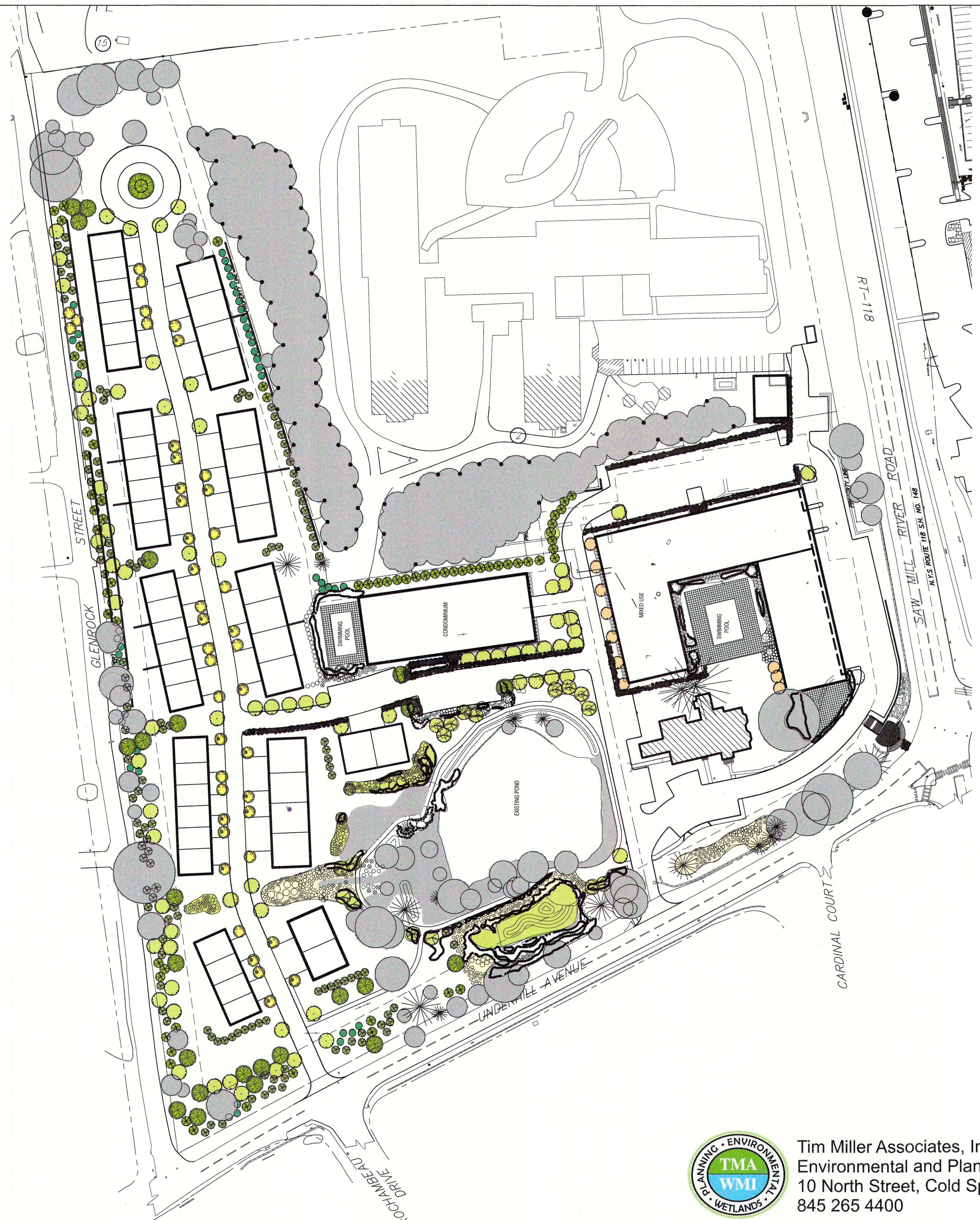
See Sheet 5 for listing of individual trees to be saved or removed.





Tim Miller Associates, Inc.
 Environmental and Planning Services
 10 North Street, Cold Spring, NY
 845 265 4400

Existing Trees to Remain
UNDERHILL FARMS

Underhill Avenue
 Yorktown Heights, NY



Data Sources:
 "Preliminary Landscape Plan", Blades and Goven Landscape Architects
 "Tree Removal Plan", Site Design Consultants
 "Tree Survey prepared for Unicorn Soundview LLC" by Badey and Watson Engineering and Surveying

  - New trees to be planted

Total Number of Existing Trees - 714
 Total Number of Protected Trees - 603
 Protected Trees to be Removed - 402
 Protected Trees to Remain - 201
 Non-Protected Trees to Remain - 19
 New Trees to be Planted - 336

APPROVED
 Resolution Number 23-13
 Date July 17, 2023

See Sheet 5 for listing of individual trees to be saved or removed.

New Trees to be Planted
UNDERHILL FARMS

Underhill Avenue
 Yorktown Heights, NY



Tim Miller Associates, Inc.
 Environmental and Planning Services
 10 North Street, Cold Spring, NY
 845 265 4400



Proposed Mitigation

The applicant proposes a multi-pronged approach to mitigating both the removal of the trees and the disturbance to the wetland buffer. A conceptual landscaping plan is included with this EAF; the final landscaping and tree replacement plan will use the following criteria for development of the plan.

1. Tree planting on development site. New trees will be planted as part of the site landscaping plan and wetland creation and buffer enhancement. Shrubs will be planted as part of the site landscaping and the buffer enhancement. While it is not possible to replace all trees in kind on a high density mixed use property such as this one, there are opportunities to enhance and restore the remainder of the woodland and mitigate the loss of overall function.
2. A significant number of invasive species will also be removed from the site. A total of 92 black locusts and Norway maples will be removed, both of which are designated as invasive species by the Lower Hudson Partnership for Regional Invasive Species Management. In some specific locations, select Norway maples will not be cut in order to preserve screening or viewsheds from nearby locations. At this time it is expected that 19 Norway maples will remain on the perimeter of the site.
3. Regarding stormwater and erosion control, a stormwater management plan has been prepared and will be implemented to offset the change in surface conditions on the site. The proposed structures will be planted using native wetland and transitional area species as shown on the plan set, duplicating in part the vegetative diversity and density of the existing plant community.
4. Regarding the flood control and storage function of the existing woodland, the applicant proposes the restoration and expansion of the pond and its associated wetland. The existing stream channel will be stabilized and will be re-planted with native tree and shrub species.
5. Regarding vegetative diversity and invasive species management, the applicant is proposing a detailed invasive species management program for the property and a landscaping plan that will incorporate a number of native species into the landscape. All new trees will be of native species. As noted above, a large number of the existing trees to be removed are non-native or nuisance species. All other provisions of the tree code as it relates to mitigation will be considered as the project moves forward.
6. By incorporating these concepts in to the final landscaping and tree mitigation plan, we believe that we can offset the loss of trees on the development site. The current conceptual landscaping plan includes provision for the planting of 336 new trees plus a significant number of native shrubs (See Sheet 3). Section 270-10 also provides for the payment into the Town tree fund of \$100 for every protected tree removed that is not otherwise replaced. Pursuant to final discussions with the Planning Board the applicant will also donate to this fund as deemed to be appropriate.

Data Sources:

- "Preliminary Landscape Plan", Blades and Goven Landscape Architects
- "Tree Removal Plan", Site Design Consultants
- "Tree Survey prepared for Unicorn Soundview LLC" by Badey and Watson Engineering and Surveying

Total Number of Existing Trees - 714
 Total Number of Protected Trees - 603
 Protected Trees to be Removed - 402
 Protected Trees to Remain - 201
 Non-Protected Trees to Remain - 19
 New Trees to be Planted - 336

APPROVED
 Resolution Number 23-13
 Date July 17, 2023

See Sheet 5 for listing of individual trees to be saved or removed.



Tim Miller Associates, Inc.
 Environmental and Planning Services
 10 North Street, Cold Spring, NY
 845 265 4400

Composite Plan
 Trees to be Removed, Preserved
 and Planted

UNDERHILL FARMS

Underhill Avenue
 Yorktown Heights, NY

TAG #	KEEP/REMOVE	TYPE	DIAMETER	CONDITION
0013	KEEP	SPRUCE	26"	GOOD
0014	KEEP	SPRUCE	22"	GOOD
0015	REMOVE	SPRUCE	38"	GOOD
0016	REMOVE	MAPLE	22"	GOOD
0017	REMOVE	MAPLE	32"	POOR
0018	REMOVE	MAPLE	40"	GOOD
0019	REMOVE	MAPLE (TRIPLE)	14"	GOOD
0020	REMOVE	MAPLE	22"	POOR
0021	REMOVE	MAPLE	12"	GOOD
0022	REMOVE	MAPLE	8"	GOOD
0023	REMOVE	MAPLE	8"	GOOD
0024	REMOVE	MAPLE (TWIN)	12"	GOOD
0025	REMOVE	MAPLE	14"	GOOD
0026	REMOVE	MAPLE	20"	GOOD
0027	REMOVE	MAPLE	12"	GOOD
0028	REMOVE	MAPLE	12"	GOOD
0029	REMOVE	MAPLE (?)	14"	POOR
0030	REMOVE	MAPLE (DOUBLE)	32"	POOR
0031	REMOVE	WALNUT (TRIPLE)	12"	GOOD
0032	REMOVE	MAPLE (?)	12"	POOR
0033	REMOVE	DOGWOOD	8"	POOR
0034	REMOVE	DOGWOOD	8"	GOOD
0035	REMOVE	WALNUT (TRIPLE)	12"	GOOD
0036	REMOVE	BASSWOOD (QUADRUPLE)	8"	POOR
0037	REMOVE	CEDAR (TWIN)	14"	GOOD
0038	REMOVE	MAPLE	20"	GOOD
0039	REMOVE	MAPLE	24"	GOOD
0040	REMOVE	CEDAR (TRIPLE)	10"	POOR
0041	KEEP	MAPLE	24"	GOOD
0042	KEEP	MAPLE	20"	POOR
0043	KEEP	MAPLE	8"	GOOD
0044	KEEP	MAPLE	12"	GOOD
0045	KEEP	SPRUCE	24"	GOOD
0046	KEEP	MAPLE	8"	GOOD
0048	KEEP	MAPLE	16"	GOOD
0050	KEEP	MAPLE	24"	GOOD
0051	KEEP	MAPLE	12"	GOOD
0053	KEEP	PINE	8"	GOOD
0054	REMOVE	SPRUCE	10"	GOOD
0055	REMOVE	MAPLE	8"	GOOD
0056	REMOVE	MAPLE (CLUMP)	10"	POOR
0058	KEEP	MAPLE	18"	GOOD
0059	KEEP	MAPLE	14"	GOOD
0060	KEEP	OAK	18"	GOOD
0061	KEEP	WHITE BIRCH (TWIN)	8"	GOOD
0062	KEEP	CEDAR (TWIN)	10"	GOOD
0063	KEEP	MAPLE	8"	GOOD
0064	KEEP	CEDAR (TWIN)	10"	GOOD
0065	KEEP	CEDAR	12"	GOOD
0066	KEEP	OAK	16"	GOOD
0067	KEEP	WHITE BIRCH (TRIPLE)	8"	GOOD
0068	KEEP	MAPLE (TRIPLE)	12"	GOOD
0069	KEEP	WILLOW	20"	POOR
0070	KEEP	SPRUCE	16"	GOOD
0071	REMOVE	COTTONWOOD	8"	POOR
0072	KEEP	SPRUCE	8"	GOOD
0073	KEEP	MAPLE (TWIN)	8"	GOOD
0074	KEEP	DOGWOOD	10"	GOOD
0075	KEEP	MAPLE	26"	GOOD
0076	KEEP	MAPLE	30"	GOOD
0077	KEEP	CEDAR (TWIN)	12"	GOOD
0078	KEEP	CEDAR	12"	GOOD
0079	KEEP	CEDAR	14"	GOOD
0080	KEEP	CEDAR	8"	GOOD
0081	KEEP	CEDAR	12"	GOOD
0082	KEEP	CEDAR	8"	POOR
0083	KEEP	CEDAR	12"	GOOD
0084	REMOVE	MAPLE	20"	GOOD
0085	REMOVE	MAPLE	12"	GOOD
0086	KEEP	CEDAR	8"	GOOD
0087	REMOVE	MAPLE	30"	GOOD
0088	KEEP	MULBERRY	8"	GOOD
0089	KEEP	CEDAR (TWIN)	8"	POOR
0090	KEEP	CEDAR (TWIN)	8"	GOOD
0091	KEEP	CEDAR	16"	GOOD
0092	KEEP	MULBERRY (TWIN)	10"	GOOD
0093	REMOVE	ELM	12"	GOOD
0094	REMOVE	CEDAR	8"	GOOD
0095	REMOVE	CEDAR (TWIN)	8"	GOOD
0096	REMOVE	MAPLE	30"	GOOD
0097	REMOVE	MAPLE	40"	GOOD
0098	REMOVE	MAPLE	30"	GOOD
0099	REMOVE	CEDAR	18"	GOOD
0100	REMOVE	MULBERRY	14"	GOOD
0101	REMOVE	ASPEN	8"	GOOD
0102	REMOVE	ASPEN	8"	GOOD
0103	REMOVE	TULIP	8"	GOOD
0105	REMOVE	COTTONWOOD	14"	GOOD
0107	REMOVE	ASPEN	16"	GOOD
0108	REMOVE	ASPEN	10"	GOOD
0109	REMOVE	WHITE BIRCH	8"	GOOD
0110	REMOVE	PINE	8"	GOOD
0111	REMOVE	COTTONWOOD	26"	GOOD
0112	REMOVE	APPLE (CLUMP)	8"	POOR
0113	REMOVE	ASPEN	8"	GOOD
0114	REMOVE	COTTONWOOD (TWIN)	10"	POOR
0115	REMOVE	ASPEN	16"	GOOD
0116	REMOVE	COTTONWOOD (TWIN)	8"	POOR
0117	REMOVE	MAPLE	8"	GOOD
0118	REMOVE	ASPEN	24"	GOOD
0121	REMOVE	OAK	8"	GOOD
0122	REMOVE	ASPEN	26"	GOOD
0123	REMOVE	MAPLE	18"	GOOD
0124	KEEP	MAPLE (TRIPLE)	16"	GOOD
0125	KEEP	MAPLE	12"	GOOD
0132	KEEP	APPLE	8"	GOOD
0134	KEEP	OAK	20"	GOOD
0135	KEEP	MAPLE	14"	GOOD
0137	REMOVE	MAPLE (TWIN)	14"	GOOD
0138	REMOVE	APPLE	8"	POOR

TAG #	KEEP/REMOVE	TYPE	DIAMETER	CONDITION
0140	KEEP	ASH	14"	POOR
0141	KEEP	MAPLE	14"	POOR
0142	KEEP	APPLE (CLUMP)	8"	POOR
0143	KEEP	APPLE	8"	GOOD
0144	KEEP	APPLE	10"	POOR
0145	KEEP	MAPLE	16"	POOR
0146	KEEP	MAPLE	12"	GOOD
0148	REMOVE	APPLE (TWIN)	10"	POOR
0150	REMOVE	MAPLE	12"	GOOD
0151	KEEP	MAPLE	16"	GOOD
0152	KEEP	ELM	8"	GOOD
0153	KEEP	PINE (DOUBLE)	12"	GOOD
0154	KEEP	PINE	16"	GOOD
0155	REMOVE	PINE	8"	GOOD
0156	REMOVE	ASPEN	8"	POOR
0157	REMOVE	ASPEN	14"	GOOD
0158	REMOVE	APPLE (CLUMP)	8"	POOR
0159	REMOVE	ASPEN	10"	GOOD
0160	REMOVE	PINE	10"	GOOD
0161	REMOVE	ASPEN	10"	GOOD
0162	REMOVE	ASPEN	8"	GOOD
0163	REMOVE	COTTONWOOD	12"	GOOD
0164	REMOVE	PINE	10"	GOOD
0165	KEEP	PINE	14"	GOOD
0166	KEEP	PINE	12"	GOOD
0167	KEEP	ASPEN (TWIN)	24"	GOOD
0168	KEEP	PINE	14"	GOOD
0169	KEEP	PINE	8"	GOOD
0170	KEEP	ASPEN	16"	GOOD
0171	KEEP	ASPEN	10"	GOOD
0172	KEEP	ASPEN	8"	GOOD
0173	KEEP	OAK	16"	GOOD
0174	REMOVE	ASPEN	16"	GOOD
0175	REMOVE	WILLOW	8"	POOR
0176	REMOVE	ASPEN	8"	GOOD
0177	REMOVE	WILLOW	8"	GOOD
0178	REMOVE	WILLOW	10"	POOR
0179	REMOVE	WILLOW	10"	GOOD
0180	REMOVE	WILLOW	16"	POOR
0181	REMOVE	WILLOW (TWIN)	8"	POOR
0182	REMOVE	WILLOW (TWIN)	10"	GOOD
0183	REMOVE	ASPEN	8"	GOOD
0184	REMOVE	WILLOW	12"	GOOD
0185	REMOVE	ASPEN	10"	GOOD
0186	REMOVE	ASPEN	8"	GOOD
0187	REMOVE	ASPEN	8"	GOOD
0188	REMOVE	ASPEN	8"	GOOD
0189	REMOVE	ASPEN	8"	GOOD
0190	REMOVE	MAPLE	10"	GOOD
0191	REMOVE	WILLOW	10"	POOR
0192	REMOVE	MAPLE	10"	GOOD
0193	REMOVE	ASPEN	10"	GOOD
0194	REMOVE	HICKORY	8"	GOOD
0195	REMOVE	ASPEN	8"	GOOD
0196	REMOVE	ASPEN	8"	GOOD
0197	KEEP	ASPEN	8"	GOOD
0198	REMOVE	CATALPA	12"	GOOD
0199	REMOVE	ASPEN	10"	GOOD
0200	REMOVE	ASPEN	8"	GOOD
0201	REMOVE	ASPEN	12"	GOOD
0202	REMOVE	ASPEN	8"	GOOD
0203	REMOVE	ASPEN	8"	GOOD
0204	REMOVE	ASPEN	8"	GOOD
0205	REMOVE	ASPEN	8"	GOOD
0206	REMOVE	HICKORY	8"	GOOD
0208	REMOVE	ASPEN	8"	GOOD
0209	REMOVE	ASPEN	8"	GOOD
0210	REMOVE	ASPEN	8"	GOOD
0211	REMOVE	ASPEN	8"	GOOD
0212	REMOVE	ASPEN	8"	GOOD
0213	REMOVE	ASPEN	10"	POOR
0214	REMOVE	MAPLE	8"	GOOD
0215	REMOVE	ASPEN	10"	GOOD
0216	REMOVE	ASPEN	10"	GOOD
0217	REMOVE	ASPEN	8"	GOOD
0218	REMOVE	ASPEN	8"	GOOD
0219	REMOVE	ASPEN	8"	GOOD
0220	REMOVE	ASPEN (TWIN)	8"	GOOD
0221	REMOVE	ASPEN	10"	GOOD
0222	REMOVE	ASPEN	8"	GOOD
0223	REMOVE	ASPEN	10"	GOOD
0224	REMOVE	ASPEN	10"	GOOD
0225	REMOVE	ASPEN	10"	POOR
0226	REMOVE	WILLOW	10"	POOR
0227	REMOVE	ASPEN	14"	GOOD
0228	REMOVE	ELM	12"	GOOD
0229	REMOVE	ASPEN	10"	GOOD
0230	REMOVE	ASPEN	16"	GOOD
0231	REMOVE	ASPEN	8"	POOR
0232	REMOVE	ASPEN	10"	GOOD
0233	REMOVE	ASPEN (TWIN)	12"	POOR
0234	REMOVE	MULBERRY	8"	POOR
0235	REMOVE	ASPEN	18"	GOOD
0236	REMOVE	ASPEN	16"	GOOD
0238	REMOVE	ASPEN	8"	POOR
0239	REMOVE	WILLOW	14"	GOOD
0240	REMOVE	WILLOW	16"	GOOD
0241	REMOVE	ASPEN	12"	GOOD
0242	REMOVE	ASPEN	16"	GOOD
0243	REMOVE	ASPEN	14"	POOR
0244	REMOVE	ASPEN	16"	GOOD
0245	REMOVE	ASPEN	18"	GOOD
0246	REMOVE	ASPEN	10"	GOOD
0247	REMOVE	ASPEN	12"	GOOD
0248	REMOVE	ASPEN	8"	GOOD
0249	REMOVE	MAPLE	8"	POOR
0250	KEEP	MAPLE	10"	GOOD
0251	KEEP	HICKORY	12"	GOOD
0253	KEEP	MAPLE (TWIN)	8"	GOOD
0255	KEEP	CHERRY	8"	POOR

TAG #	KEEP/REMOVE	TYPE	DIAMETER	CONDITION
0256	REMOVE	WILLOW	36"	GOOD
0258	REMOVE	MAPLE	14"	GOOD
0259	REMOVE	WILLOW	24"	POOR
0260	REMOVE	MAPLE	24"	GOOD
0261	REMOVE	WILLOW	24"	GOOD
0262	REMOVE	WILLOW	16"	GOOD
0263	REMOVE	TULIP (TWIN)	14"	GOOD
0266	REMOVE	MAPLE (TWIN)	8"	GOOD
0267	REMOVE	ASPEN (TWIN)	24"	GOOD
0268	REMOVE	ASPEN	16"	GOOD
0270	REMOVE	APPLE (CLUMP)	8"	POOR
0273	REMOVE	MAPLE	8"	GOOD
0274	REMOVE	MAPLE	28"	GOOD
0277	REMOVE	MAPLE	16"	GOOD
0278	REMOVE	MAPLE (TWIN)	10"	GOOD
0279	REMOVE	TULIP	18"	POOR
0281	REMOVE	CHERRY	12"	GOOD
0282	REMOVE	HICKORY	8"	POOR
0283	REMOVE	MAPLE (TWIN)	12"	GOOD
0284	REMOVE	OAK	42"	GOOD
0285	REMOVE	TULIP (TWIN)	14"	GOOD
0286	REMOVE	TULIP (DOUBLE)	16"	GOOD
0287	REMOVE	TULIP	14"	GOOD
0288	REMOVE	MAPLE	8"	GOOD
0289	REMOVE	MAPLE	12"	GOOD
0290	REMOVE	MAPLE	8"	GOOD
0291	REMOVE	MAPLE	12"	GOOD
0292	REMOVE	MAPLE	10"	GOOD
0293	REMOVE	APPLE	10"	GOOD
0294	REMOVE	APPLE (CLUMP)	8"	GOOD
0295	KEEP	MAPLE	14"	GOOD
0296	KEEP	HICKORY	8"	GOOD
0297	REMOVE	MAPLE	16"	GOOD
0298	REMOVE	TULIP (DOUBLE)	16"	POOR
0299	REMOVE	MAPLE	8"	GOOD
0300	KEEP	OAK	30"	GOOD
0301	KEEP	OAK (DOUBLE)	26"	GOOD
0302	KEEP	CHERRY (TWIN)	14"	GOOD
0303	REMOVE	CHERRY	8"	POOR
0304	REMOVE	TULIP	12"	POOR
0305	REMOVE	BIRCH	8"	GOOD
0306	REMOVE	TULIP (TWIN)	18"	GOOD
0307	REMOVE	BIRCH (TWIN)	8"	POOR
0308	KEEP	MAPLE	10"	GOOD
0309	KEEP	MAPLE	8"	GOOD
0310	REMOVE	TULIP	12"	GOOD
0311	KEEP	TULIP	24"	GOOD
0312	KEEP	OAK	10"	GOOD
0313	KEEP	MAPLE	8"	GOOD
0314	KEEP	MAPLE	12"	GOOD
0315	KEEP	MAPLE	8"	GOOD
0316	KEEP	MAPLE	8"	GOOD
0317	KEEP	HICKORY	20"	GOOD
0318	KEEP	HICKORY	18"	GOOD
0319	KEEP	OAK	8"	GOOD
0320	KEEP	MAPLE	14"	GOOD
0321	KEEP	MAPLE	12"	GOOD
0322	KEEP	APPLE	8"	POOR
0323	KEEP	MAPLE	8"	GOOD
0324	KEEP	HICKORY (CLUMP)	16"	GOOD
0325	KEEP	HICKORY	12"	GOOD
0326	KEEP	MAPLE	14"	GOOD
0327	KEEP	TULIP (TWIN)	24"	GOOD
0328	KEEP	HICKORY	12"	GOOD
0329	KEEP	OAK	8"	GOOD
0330	KEEP	HICKORY	18"	GOOD
0331	KEEP	MAPLE	12"	GOOD
0332	KEEP	MAPLE	8"	GOOD
0333	KEEP	HICKORY	14"	GOOD
0334	KEEP	HICKORY	14"	GOOD
0335	KEEP	HICKORY (CLUMP)	16"	POOR
0337	KEEP	MAPLE	14"	GOOD
0338	KEEP	MAPLE	10"	GOOD
0339	KEEP	HICKORY	14"	GOOD
0340	KEEP	HICKORY	8"	GOOD
0341	REMOVE	ASPEN	10"	GOOD
0342	REMOVE	ASPEN	8"	GOOD
0343	REMOVE	ASPEN	8"	GOOD
0344	REMOVE	ASPEN	12"	GOOD
0345	REMOVE	ASPEN		