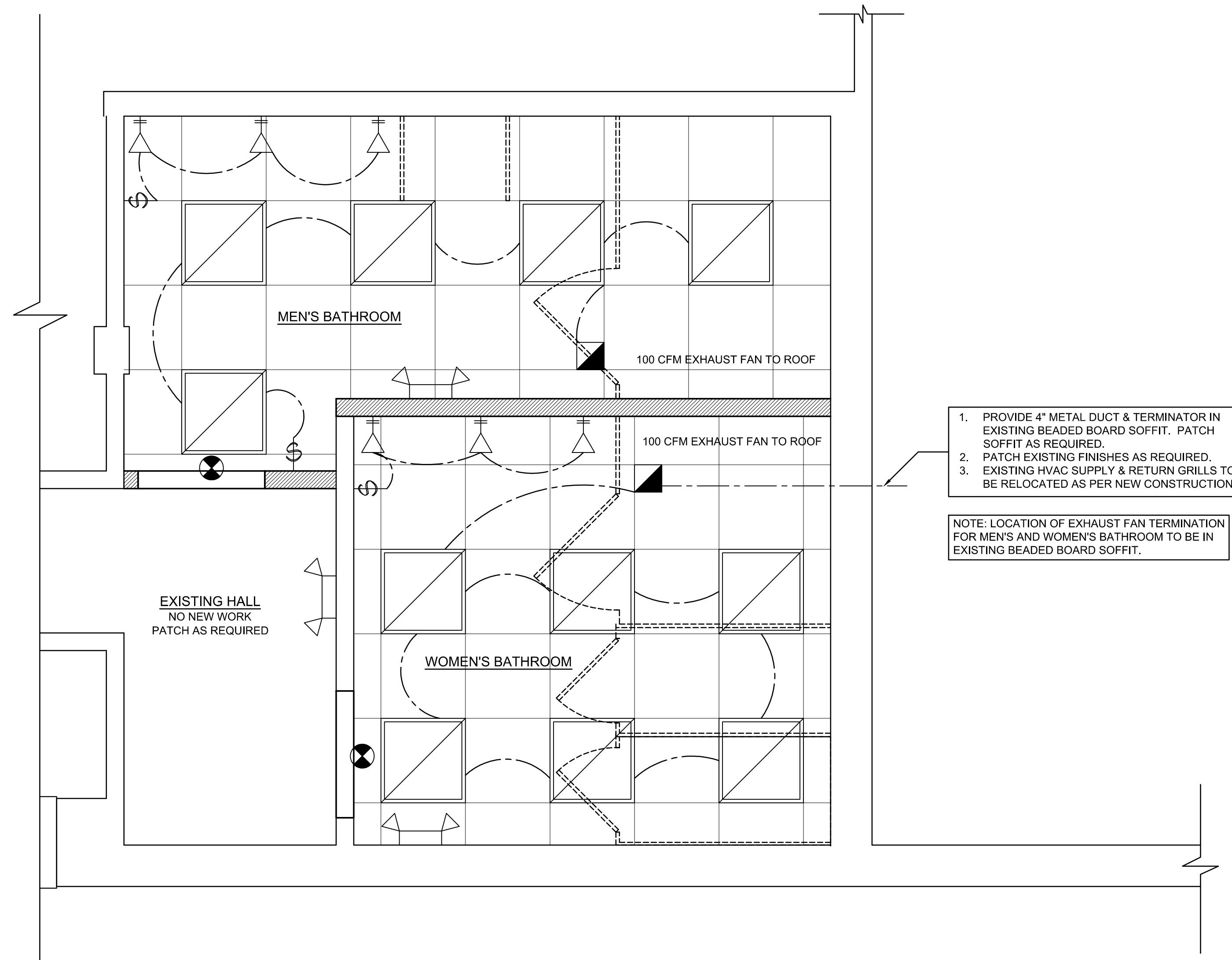


NOTE: DO NOT SCALE DRAWINGS. REFER TO WRITTEN MEASUREMENTS FOR ACCURACY, OR CONTACT ARCHITECT. CONTACT ARCHITECT IF THERE ARE ANY DISCREPANCIES.
UNAUTHORIZED ALTERATIONS OR ADDITIONS TO THIS DRAWING IS A VIOLATION OF NEW YORK STATE EDUCATION LAW.

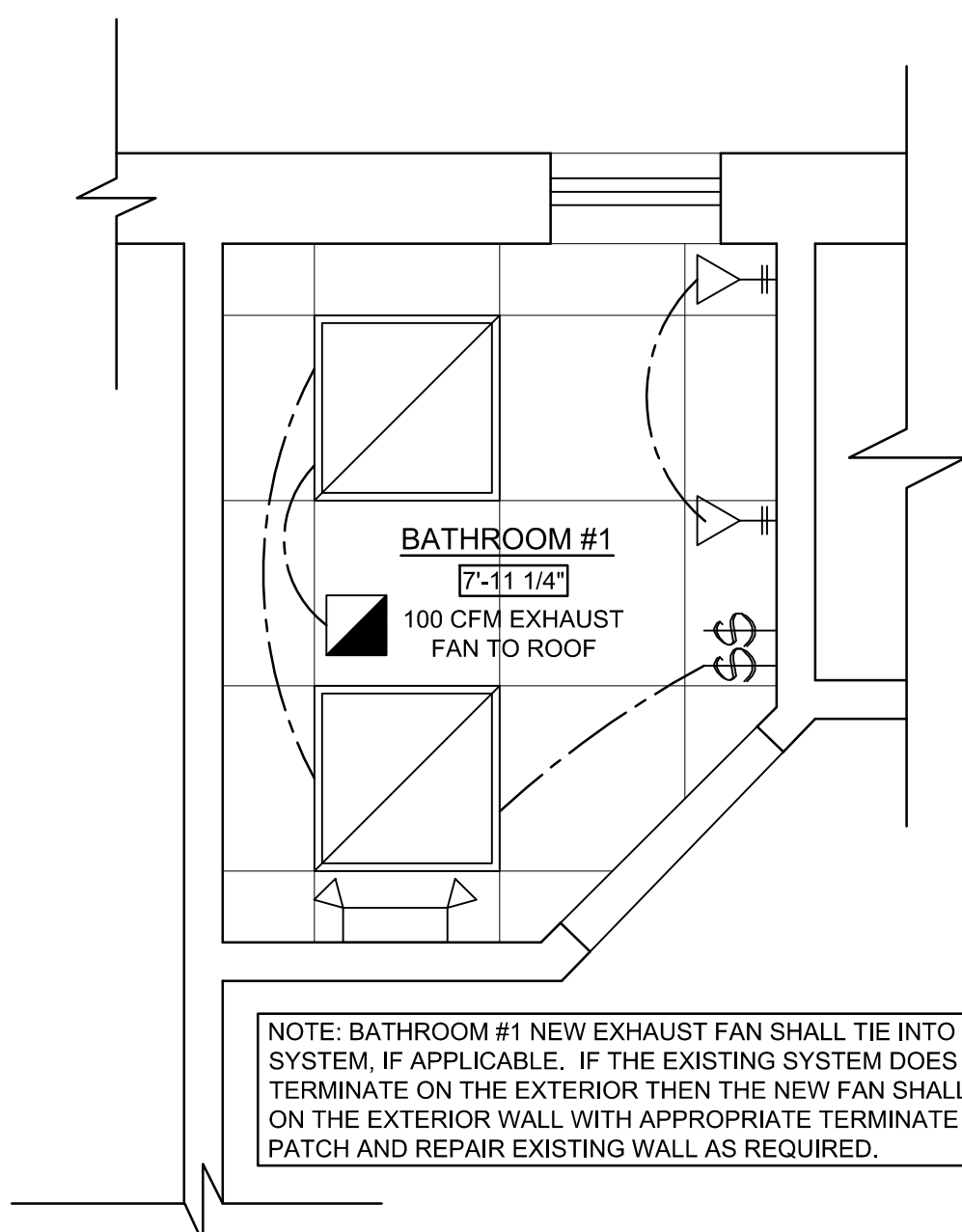
© Copyright 2016 MICHAEL PICCIRILLO ARCHITECTURE



1. PROVIDE 4" METAL DUCT & TERMINATOR IN EXISTING BEADED BOARD SOFFIT. PATCH SOFFIT AS REQUIRED.
2. PATCH EXISTING FINISHES AS REQUIRED.
3. EXISTING HVAC SUPPLY & RETURN GRILLES TO BE RELOCATED AS PER NEW CONSTRUCTION.

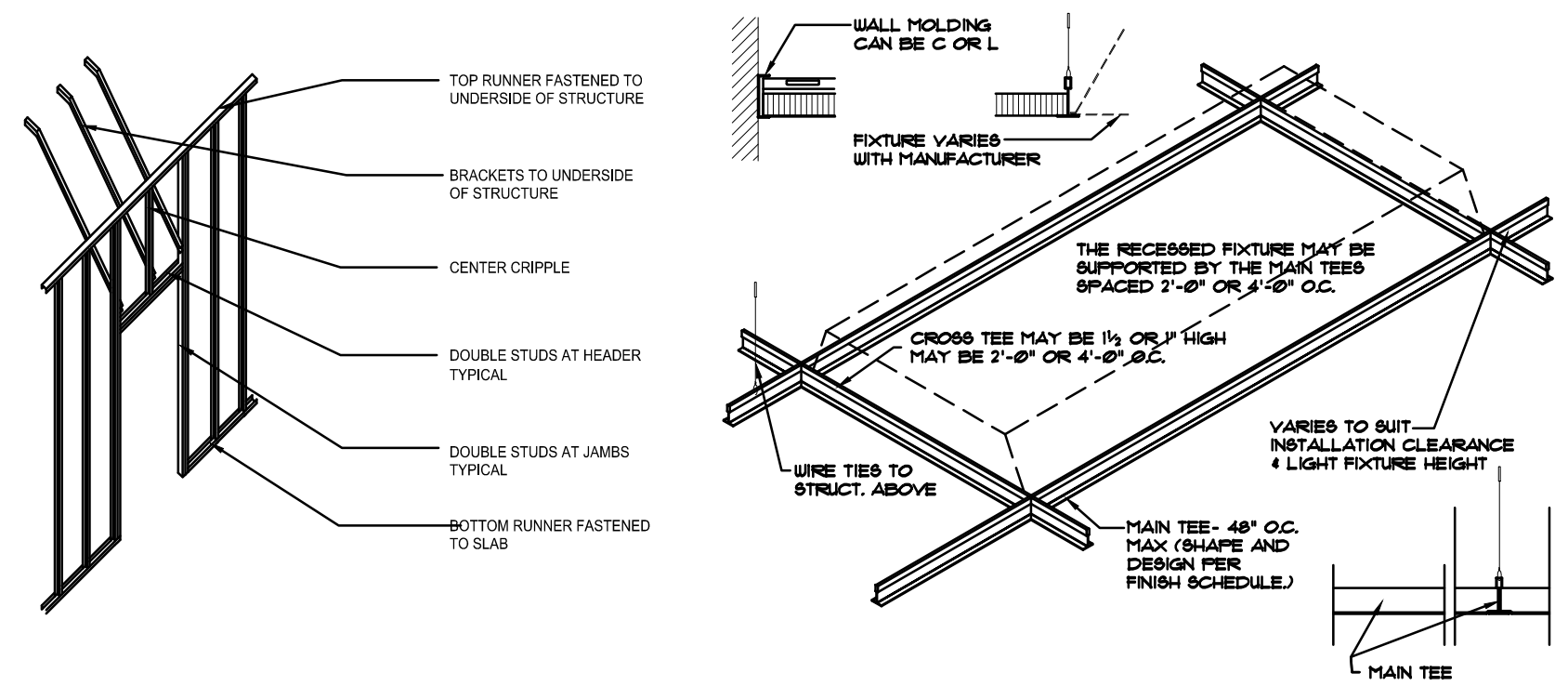
NOTE: LOCATION OF EXHAUST FAN TERMINATION FOR MEN'S AND WOMEN'S BATHROOM TO BE IN EXISTING BEADED BOARD SOFFIT.

A REFLECTED CEILING PLAN
SCALE: 1/2" = 1'-0"



B REFLECTED CEILING PLAN
SCALE: 1/2" = 1'-0"

NOTE: BATHROOM #1 NEW EXHAUST FAN SHALL TIE INTO EXIS SYSTEM, IF APPLICABLE. IF THE EXISTING SYSTEM DOES NOT TERMINATE ON THE EXTERIOR THEN THE NEW FAN SHALL TIE ON THE EXTERIOR WALL WITH APPROPRIATE TERMINATE TRIM PATCH AND REPAIR EXISTING WALL AS REQUIRED.



1 TYPICAL WALL DETAIL
SCALE: N.T.S.

2 SUSPENDED CEILING DIAGRAM
SCALE: N.T.S.

- NOTES:
1. AT EACH END OF LIGHT FIXTURE IN INTERLOCKING CROSS TEE OR LOCKING BAR MUST BE USED.
 2. THE TOTAL WEIGHT OF A LIGHT FIXTURE AND OTHER EQUIPMENT (AIR BOXES ETC.) AND CEILING MATERIAL SUPPORTED BY THE MAIN BEAM MUST NOT EXCEED THE ALLOWABLE DEFLECTION OF 1/400 OF ITS SPAN. DEFLECTION DATA MUST BE FURNISHED AND CERTIFIED BY THE MANUFACTURER.
 3. SURFACE OR PENDANT FIXTURES MUST BE INDEPENDENTLY SUPPORTED FROM 1 1/2" BLOCK OR FROM FLOOR OR ROOF CONSTRUCTION.

ELECTRICAL LEGEND

	NEW WALL RECEPTACLE		COMMERCIAL GRADE LIGHT SWITCH
	WALL RECEPTACLE AT 48" A.F.F.		NEW 140 CFM EXHAUST FAN BY PANASONIC WITH HUMIDISTAT BY JOHNSON CONTROL OR APPROVED EQUAL
	GROUND FAULT RECEPTACLE (GFI)		EXIT SIGN MODEL #: LPX75D BY SURE-LITES LED OR APPROVED EQUAL
	RECESSED LIGHT FIXTURE		EMERGENCY LIGHT WITH BATTERY BACKUP MODEL #: XR12206
	SURFACE MOUNTED LIGHT FIXTURE		EMERGENCY LIGHT BY SURE-LITE OR APPROVED EQUAL
	SCONCE		2' x 2' LED RECESSED LUMINAIRE LIGHTING FIXTURE MODEL#: LVT 22 SERIES BY LUMINATION LED LUMINAIRES. LVT-22-A-0-2000-MM-8-35-VQ-LT-WHITE. GC TO SUBMIT CATALOG CUT PRIOR TO ORDERING.
	SUSPENDED ACOUSTICAL TILE GRID MODEL: SUPERFINE XL 9/16" EXPOSED TEE BY ARMSTRONG CEILINGS		

REFLECTED CEILING PLAN NOTES

1. ALL EXISTING AND/OR RELOCATED SUPPLY DIFFUSERS AND RETURN AIR GRILLES SHALL BE CLEANED PRIOR TO REINSTALLATION.
2. REPLACE ALL STAINED AND DAMAGED OR MISSING CEILING TILES TO MATCH EXISTING.
3. WHERE EXISTING CEILINGS ARE SCHEDULED TO REMAIN, MODIFY EXISTING GRID AS REQUIRED (INCLUDING RELOCATING CEILING MANS, IF NECESSARY) TO ACCOMMODATE NEW LIGHTING LAYOUT. REMOVE AND ADD TO EXISTING CEILING GRID AS REQUIRED TO PRESENT A UNIFORM AND NEAT APPEARANCE.
4. EXISTING CEILING HEIGHT TO REMAIN
5. CONFIRM LOCATIONS OF ALL LIGHT FIXTURES, EXIT LIGHTS, EMERGENCY LIGHTS AND NIGHT LIGHTS PRIOR TO CONSTRUCTIONERZ L.L.P.
6. PROVIDE POWER FOR ALL NEW OR RELOCATED EQUIPMENT

No.	DATE	ISSUE
1	10/17/17	ISSUED FOR BIDDING
2	11/16/17	REVISED AS PER ENGINEERING DEPT. COMMENTS

PROJECT NAME:

JOHN C. HART MEMORIAL LIBRARY
BATHROOM RENOVATIONS

PROJECT ADDRESS:

1130 EAST MAIN STREET
SHRUB OAK, NEW YORK
10588



MICHAEL A. PICCIRILLO, AIA

345 KEAR STREET SUITE #203
YORKTOWN, NEW YORK 10598

TELEPHONE: 914-368-9838
FACSIMILE: 914-368-9839
michael@mpiccirilloarchitect.com
www.mpiccirilloarchitect.com

**REFLECTED CEILING PLAN
DETAILS**

SCALE: AS NOTED DATE: 08-20-2018

DESIGN BY: MAP

CHECKED BY: MAP

1 OF 1

A-150