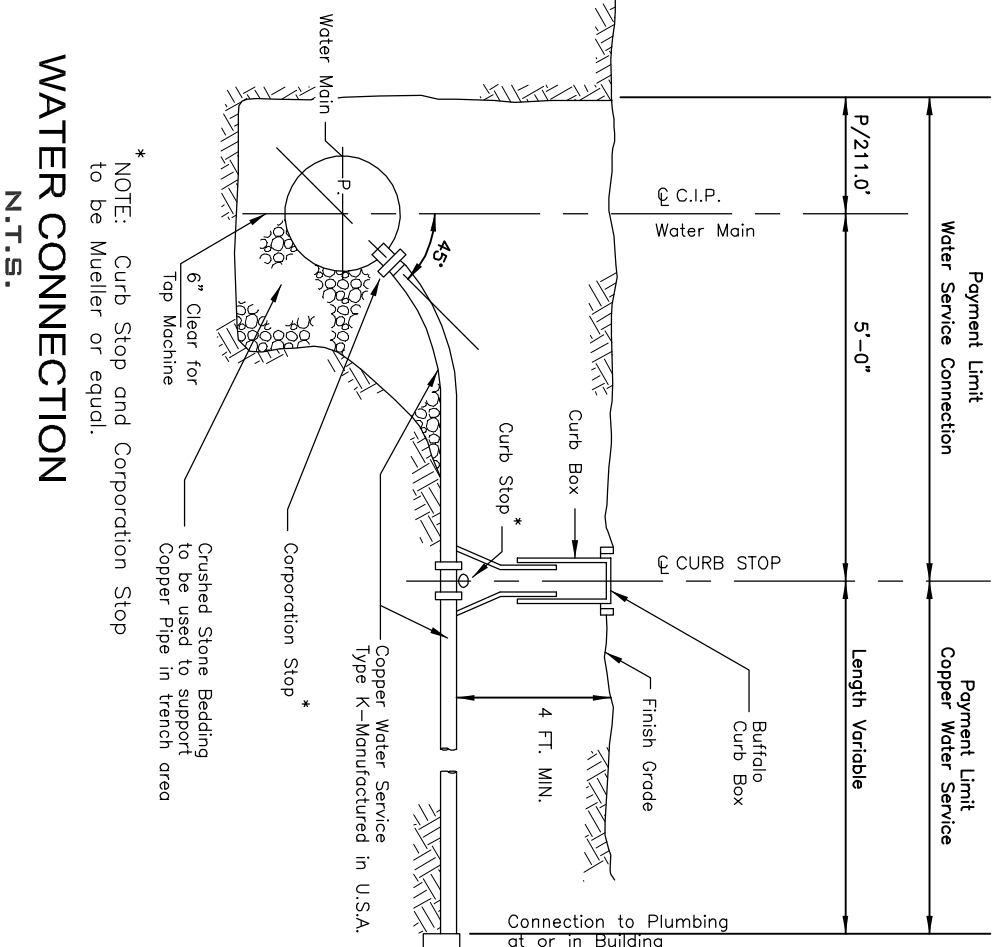
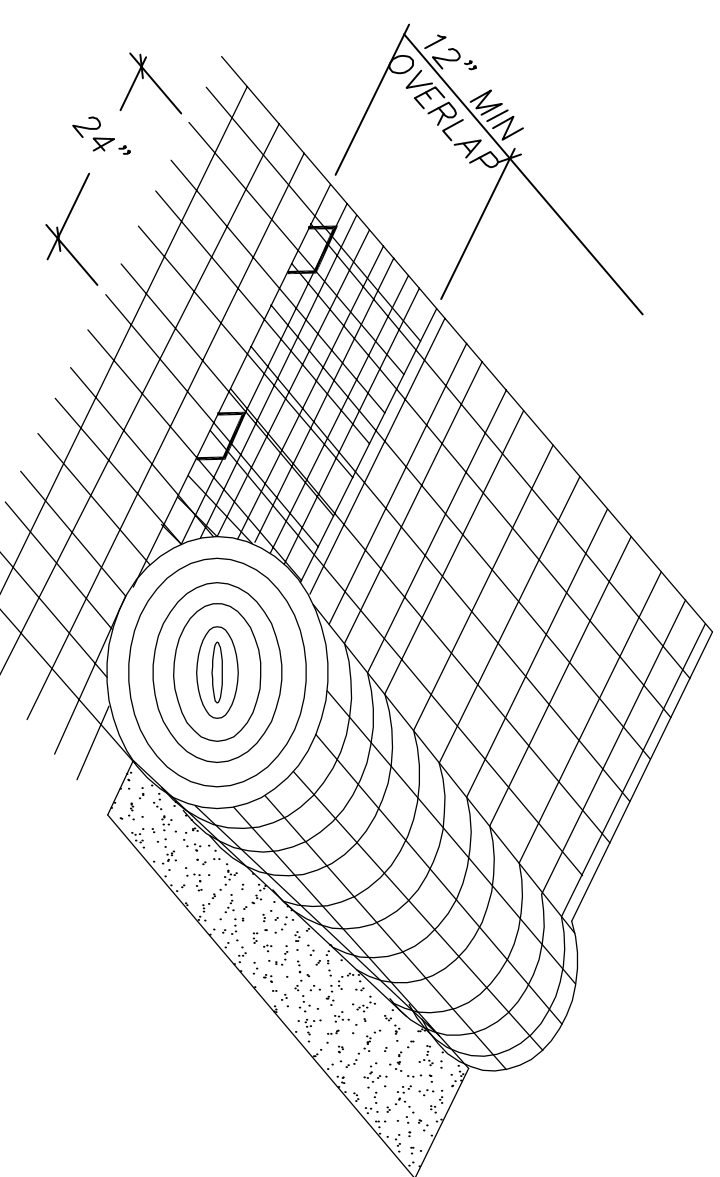


- CONSTRUCTION SPECIFICATIONS:**
1. STONE SIZE - USE 2" STONE OR EQUIVALENT OR RECYCLED CONCRETE EQUIVALENT.
  2. JUTE MATTING SHALL BE FASTENED IN PLACE USING IRON STAPLES. A MINIMUM 1/2" OVERLAP SHALL BE PROVIDED BETWEEN ADJACENT MATS. STAPLES SHALL BE PLACED A MAXIMUM OF 24" ON CENTER.
  3. THICKNESS - NOT LESS THAN SIX (6) INCHES.
  4. WIDTH - TWELVE (12) FEET MINIMUM, BUT NOT LESS THAN THE TOLL WIDTH AT POINTS WHERE MATS AND DEPRESS OCCUR.
  5. AND DEPRESS OCCUR, BE PLACED OVER THE ENTIRE AREA PRIOR TO PLACING OF STONE.
  6. SURFACE WATER - ALL SURFACE WATER FLOWING OR OVERFLOWING, A MOBILE BERM WITH 5:1 SLOPES WILL BE PROVIDED.
  7. MAINTENANCE - THE ENTRANCE SHALL BE MAINTAINED IN A CONDITION WHICH WILL PREVENT WATER OR FLOWING OF SEWAGE FROM PUBLIC RIGHTS-OF-WAY. ALL SEDIMENT SPILLED, DISPERSED OR TRACED ONTO PUBLIC RIGHTS-OF-WAY MUST BE REMOVED IMMEDIATELY.
  8. WASHING - WHEN WASHING IS REQUIRED, IT SHALL BE DONE ON AN AREA STABILIZED WITH WHICH DRAINS INTO AN APPROVED SEDIMENT TRAPPING DEVICE.
  9. FENCING - FENCING AND NEEDS MAINTENANCE SHALL BE PROVIDED AFTER EACH RAIN.

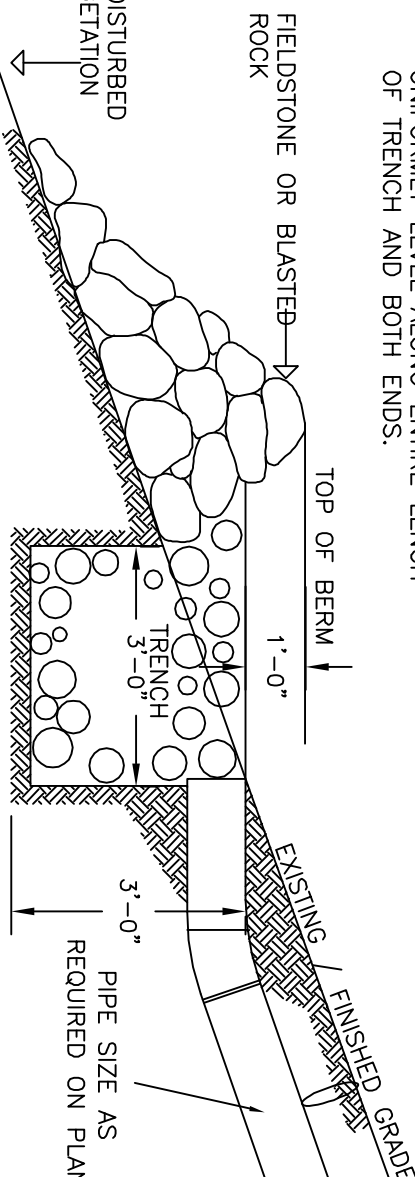
**STABILIZED CONSTRUCTION ENTRANCE**  
N.T.S.



**WATER CONNECTION**  
N.T.S.



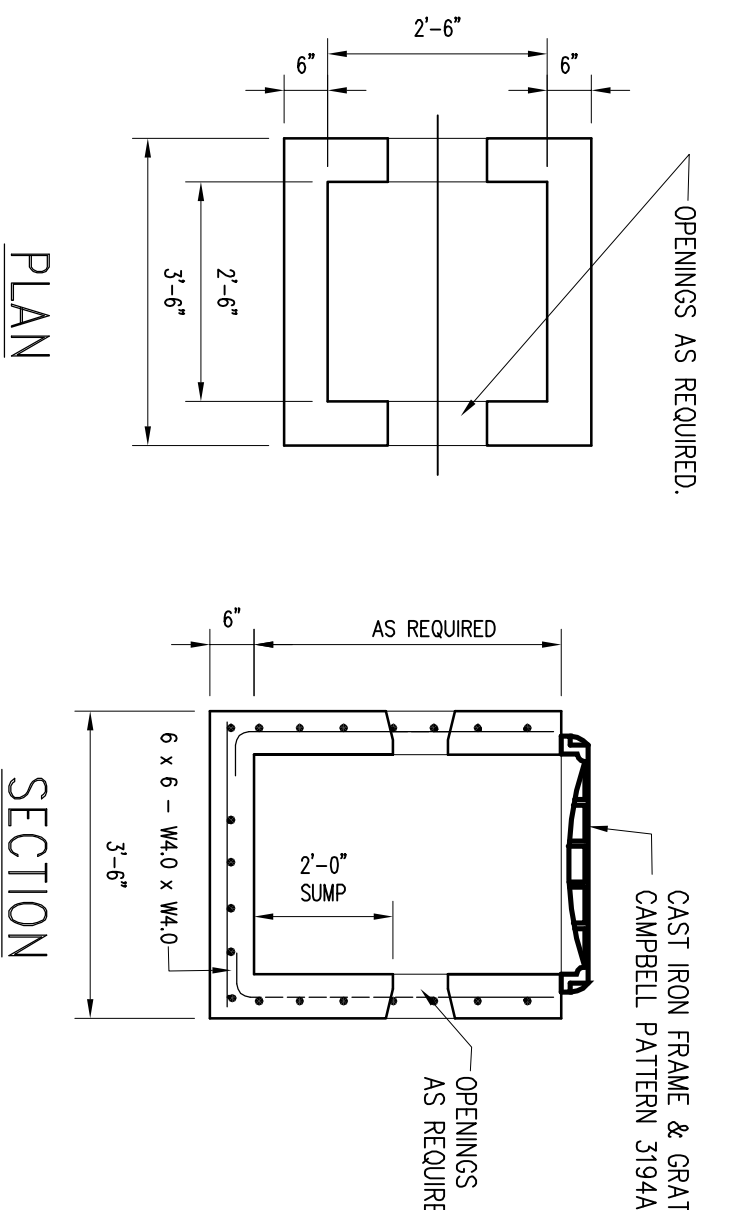
**JUTE MATTING DETAIL**  
SCALE: N.T.S.



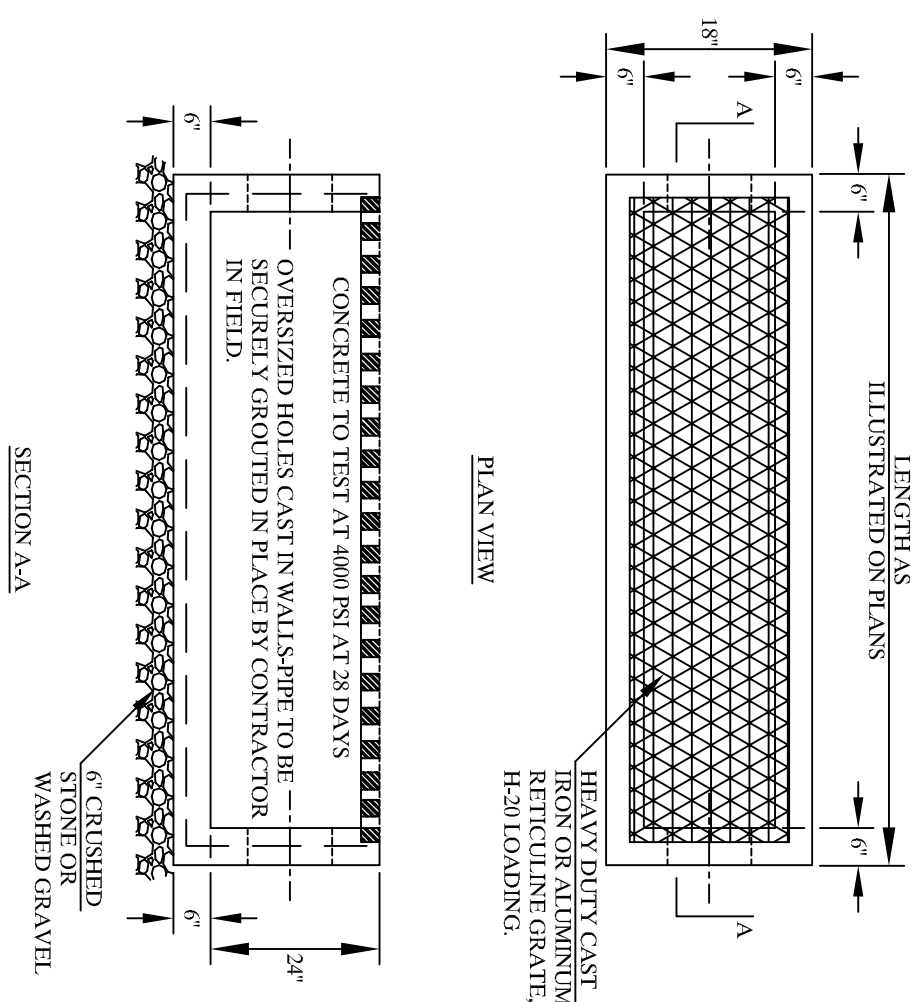
**LEVEL SPREADER**

IMPORTANT: TOP OF BERM TO BE UNIFORMLY LEVEL ALONG ENTIRE LENGTH OF TRENCH AND BOTH ENDS.

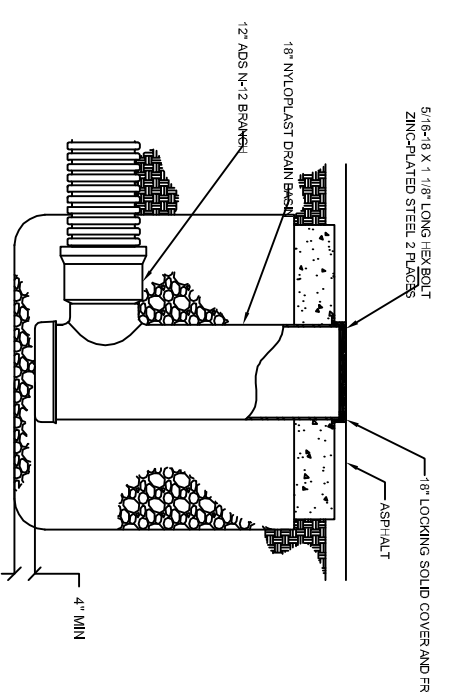
**TRENCH DRAIN DETAIL (N.T.S.)**



**YARD DRAIN**  
SCALE: N.T.S.



**SECTION A-A**



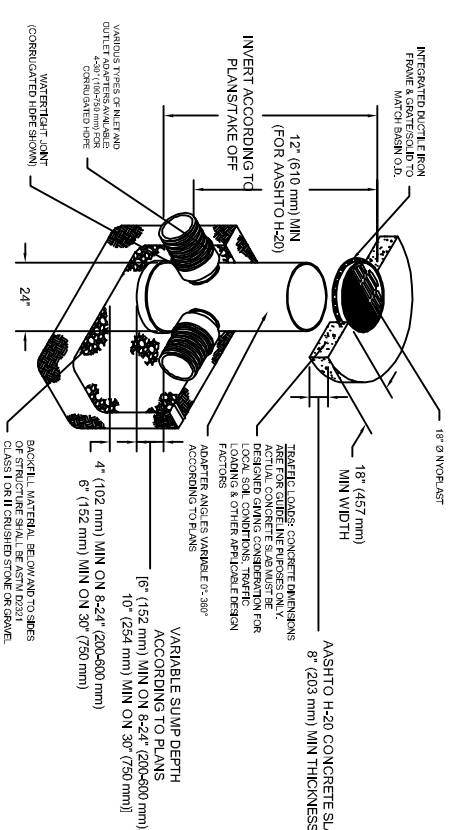
**12" NYOPLAST DRAIN BASIN**

1. GRATES/GRID COVER SHALL BE CASTLE IRON PER ASTM A536 GRADE.
2. CUSTOM DRAIN BASIN TO BE CUSTOM MANUFACTURED ACCORDING TO PLANTER'S DRAWINGS.
3. DRAINAGE CONNECTION STUD JOINT THICKNESS SHALL CONFORM TO ASTM D3272 FOR CORRUGATED HDPE (ABS & HANCOCK DUAL WALL) & ASTM D3272 FOR CORRUGATED HDPE (ABS & HANCOCK DUAL WALL) & 4. STANDARD DRAIN BASIN HAS FIXED ADAPTER LOCATIONS OF 8" & 10" FROM THE CENTERLINE. MINIMUM SPACING BETWEEN ADAPTERS SEE DRAWING NO. 7001-11-10-012.
5. DIMENSIONS ARE FOR REFERENCE ONLY.

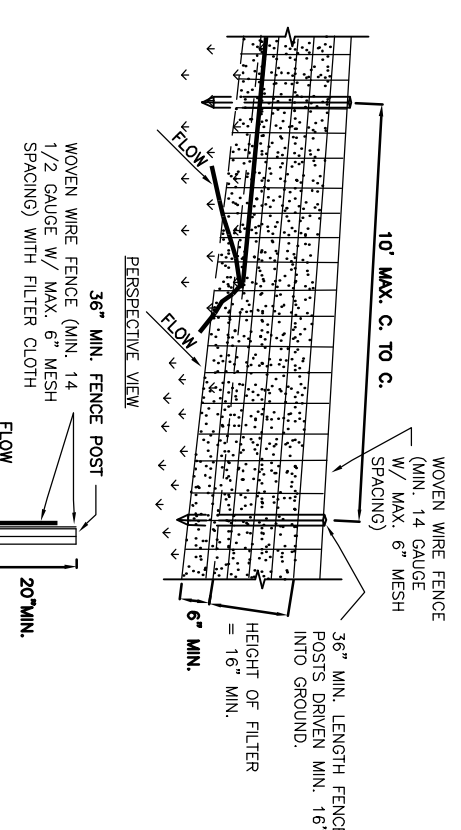
**8" NYOPLAST DRAIN BASIN**

**NOTE: THE BUILDER SHALL OBTAIN SHOP DRAWINGS FROM THE STORMWATER SYSTEM MANUFACTURER FOR APPROVAL BY THE DESIGN ENGINEER. THE DESIGN ENGINEER WILL PROVIDE THE MANUFACTURER WITH DESIGN PARAMETERS IF REQUIRED.**

**NYOPLAST DRAINAGE BASIN DETAIL**  
NOT TO SCALE



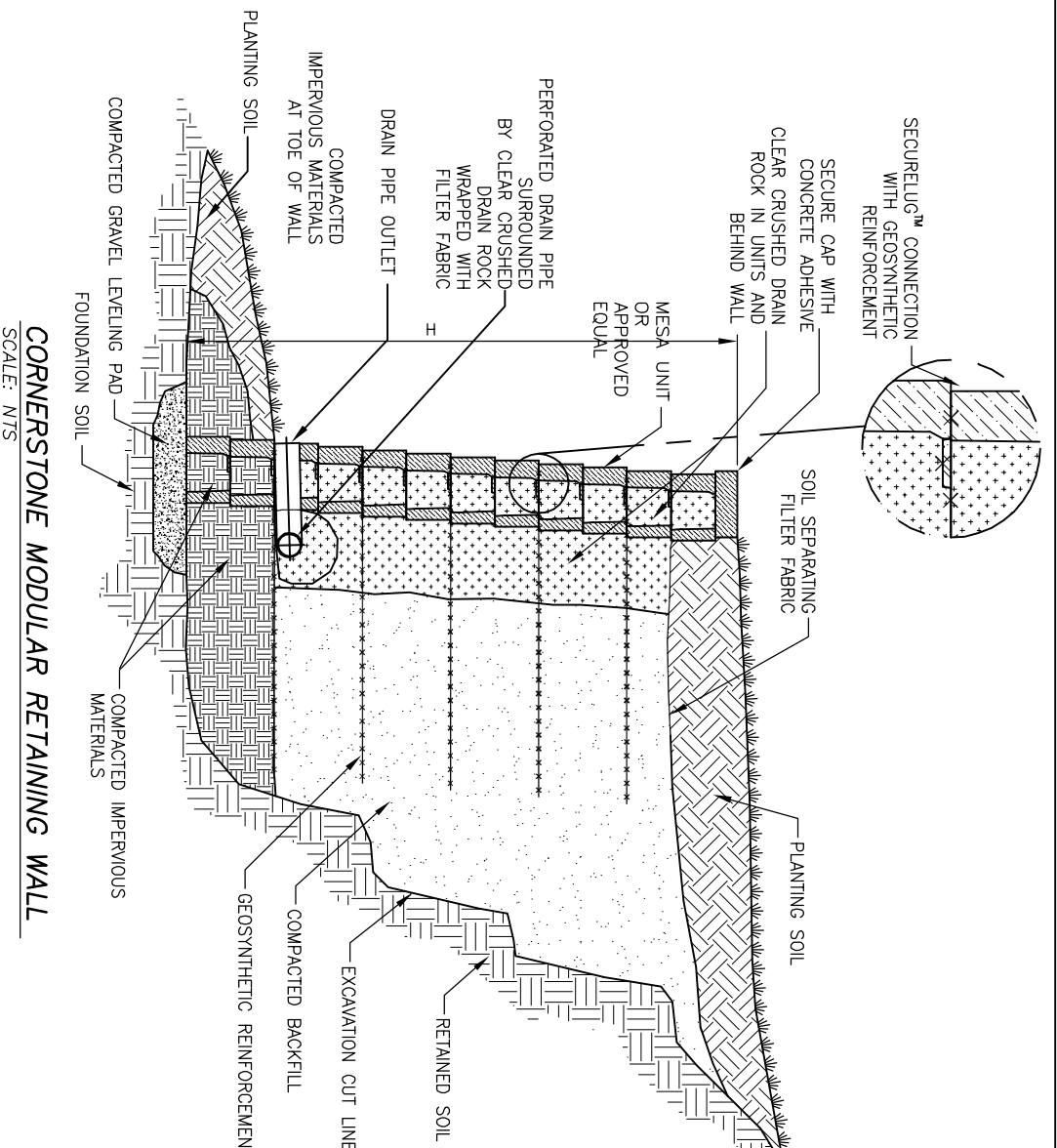
- NOTES:**
1. THE BUILDER SHALL OBTAIN SHOP DRAWINGS FROM THE STORMWATER SYSTEM MANUFACTURER FOR APPROVAL BY THE DESIGN ENGINEER. THE DESIGN ENGINEER WILL PROVIDE THE MANUFACTURER WITH DESIGN PARAMETERS IF REQUIRED.
  2. THE BUILDER SHALL OBTAIN SHOP DRAWINGS FROM THE STORMWATER SYSTEM MANUFACTURER FOR APPROVAL BY THE DESIGN ENGINEER. THE DESIGN ENGINEER WILL PROVIDE THE MANUFACTURER WITH DESIGN PARAMETERS IF REQUIRED.
  3. THE BUILDER SHALL OBTAIN SHOP DRAWINGS FROM THE STORMWATER SYSTEM MANUFACTURER FOR APPROVAL BY THE DESIGN ENGINEER. THE DESIGN ENGINEER WILL PROVIDE THE MANUFACTURER WITH DESIGN PARAMETERS IF REQUIRED.
  4. THE BUILDER SHALL OBTAIN SHOP DRAWINGS FROM THE STORMWATER SYSTEM MANUFACTURER FOR APPROVAL BY THE DESIGN ENGINEER. THE DESIGN ENGINEER WILL PROVIDE THE MANUFACTURER WITH DESIGN PARAMETERS IF REQUIRED.
  5. THE BUILDER SHALL OBTAIN SHOP DRAWINGS FROM THE STORMWATER SYSTEM MANUFACTURER FOR APPROVAL BY THE DESIGN ENGINEER. THE DESIGN ENGINEER WILL PROVIDE THE MANUFACTURER WITH DESIGN PARAMETERS IF REQUIRED.
  6. THE BUILDER SHALL OBTAIN SHOP DRAWINGS FROM THE STORMWATER SYSTEM MANUFACTURER FOR APPROVAL BY THE DESIGN ENGINEER. THE DESIGN ENGINEER WILL PROVIDE THE MANUFACTURER WITH DESIGN PARAMETERS IF REQUIRED.



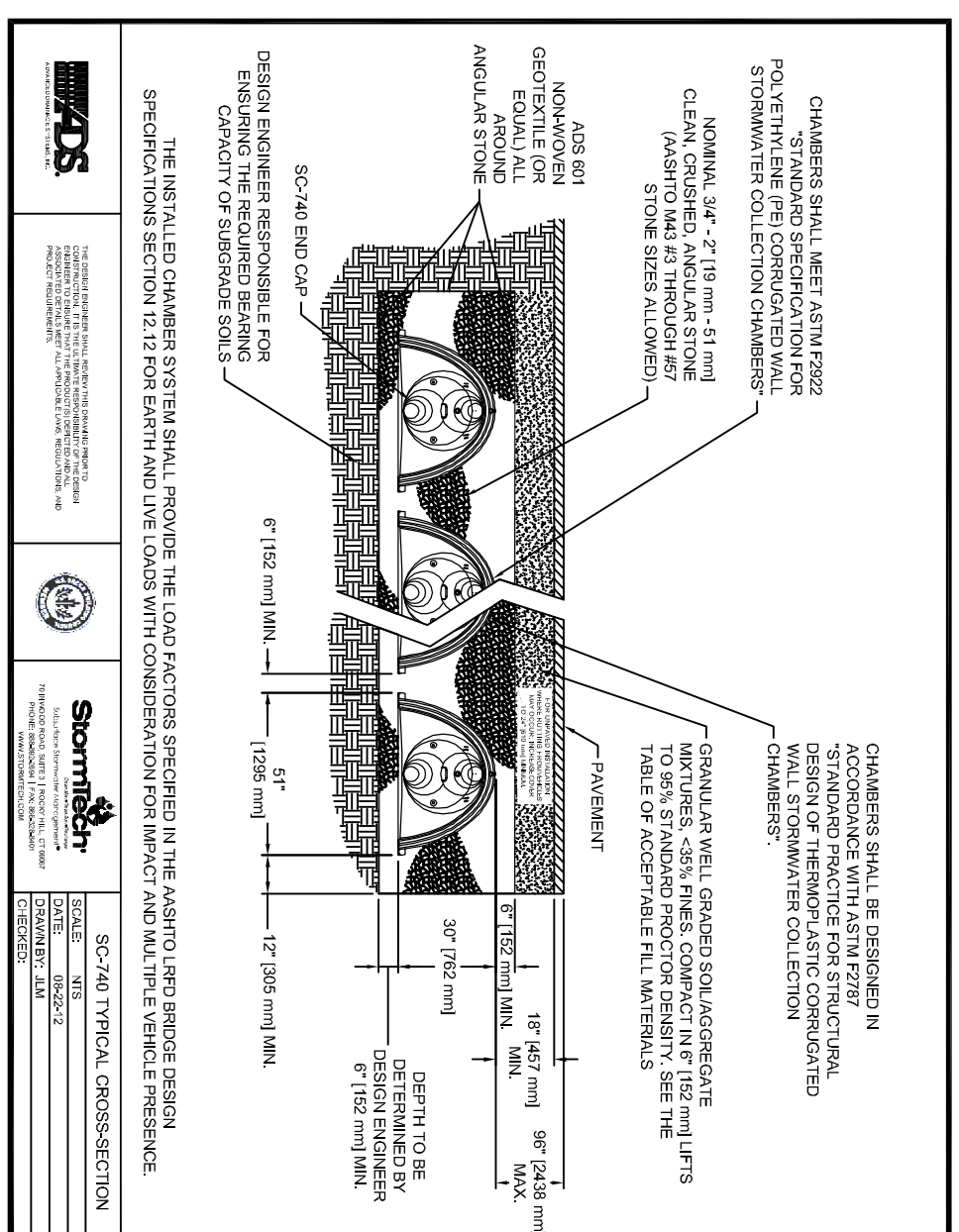
**TYPICAL SOIL STOCKPILE DETAIL**  
N.T.S.

- CONSTRUCTION SPECIFICATIONS:**
1. STAKE FENCE SHALL BE 2' HIGH AND 2' ON CENTER.
  2. FENCE POSTS SHALL BE 2" DIA. AND 6' LONG.
  3. WHEN TWO SECTIONS OF FENCE ADJOIN EACH OTHER THEY SHALL BE OVERLAPPED BY 12" AND SECURED TOGETHER WITH 12" DIA. WIRE.
  4. REFERENCED UNITS SHALL BE OBTAIN, ENHANCED, OR APPROVED EQUIVALENT.
  5. MAINTENANCE SHALL BE PROVIDED AS NEEDED AND IMPROVED WHEN BROKEN OR DAMAGED IN THE SOIL FENCE.

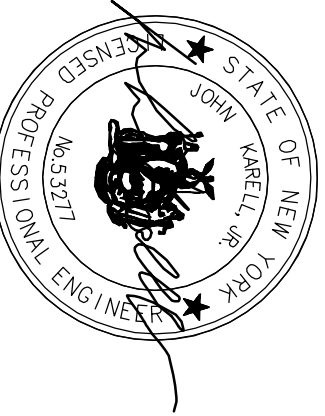
**SILT FENCE**



**CORNERSTONE MODULAR RETAINING WALL**  
SCALE: N.T.S.



**SEWER HOUSE CONNECTION**  
SCALE: N.T.S.



**JOHN KARELL, JR. P.E.**  
121 CUSHMAN ROAD  
PATERSON, NEW YORK 12563

OWNER:	PANBAR REALTY, LLC 2060 ALLAN AVENUE YORKTOWN (NY)	SCALE:	LATEST REVISION:
DATED:	MAY 4, 2020	TAX MAP:	SHEET NO.
DATE:	37-18-2-30		D-1

ALTERATION OF THIS DRAWING EXCEPT BY A LICENSED P.E. OR ARCHITECT OR LICENSED LAND SURVEYOR IS ILLEGAL. ANY ALTERATION BY A P.E. OR ARCHITECT OR SURVEYOR MUST BE INDICATED AND BEAR HIS SEAL, SIGNATURE AND DATE OF ALTERATION.

NO.	DATE	REVISION
1	10-2-2020	TOWN COMMENTS
2	11-30-2020	