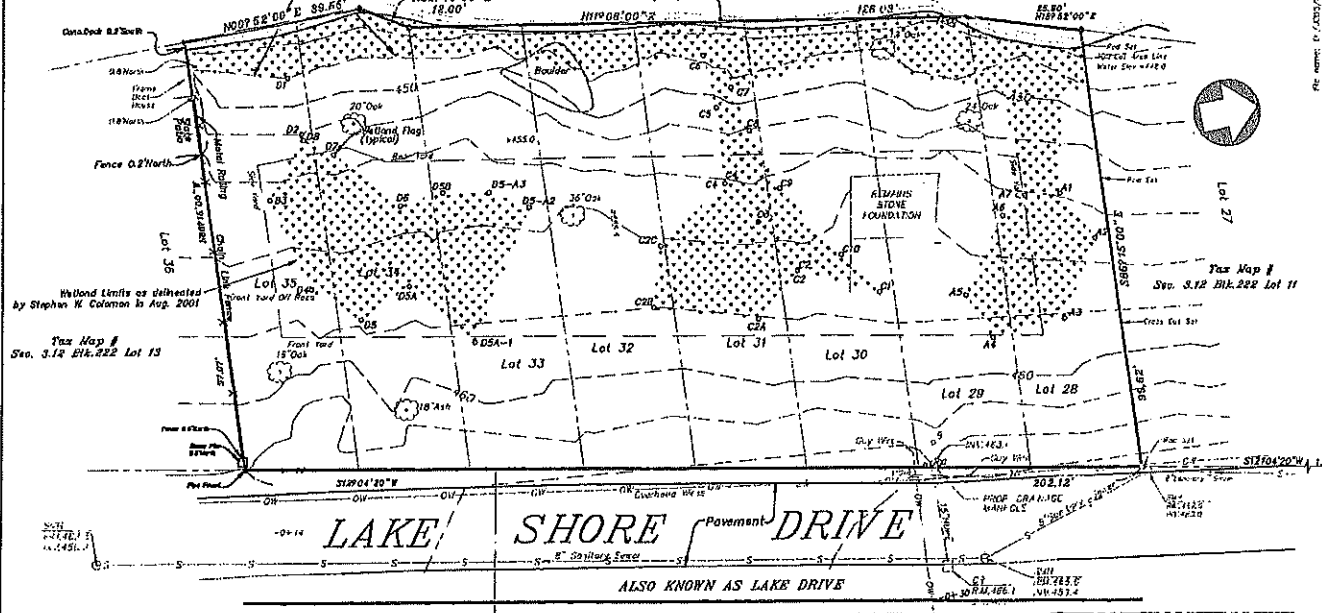


# Mohegan Lake

Approximate Location of Revised Wetland Limits as delineated by Stephen W. Coleman Wetland Consulting Ltd. (Steve Coleman, Town & Wetland Inspector) in November, 2001

Water Elev. = 444.52  
(NO FLOOD ELEVATION DETERMINED)  
Edge of Water on Aug. 21, 2001



Wetland Limits as delineated by Stephen W. Coleman in Aug. 2001  
Tax Map #  
Sec. 3.12 Bk. 222 Lot 13

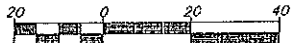
Tax Map #  
Sec. 3.12 Bk. 222 Lot 11

Tax Map #  
Sec. 3.12 Bk. 222 Lot 63

Tax Map #  
Sec. 3.12 Bk. 222 Lot 64

Tax Map #  
Sec. 3.12 Bk. 222 Lot 48

## WETLAND MAP



SCALE: 1"=20'

Wetland Map  
 WETLAND AND OPEN PROPERTY  
 Stephen W. Coleman  
 Wetland Inspector  
 Wetland Consulting Ltd.  
 603-839-3000  
 www.wetlandconsulting.com