

Total Macro Facilities: 25

**Town of Yorktown**

36.64 sq. mi.

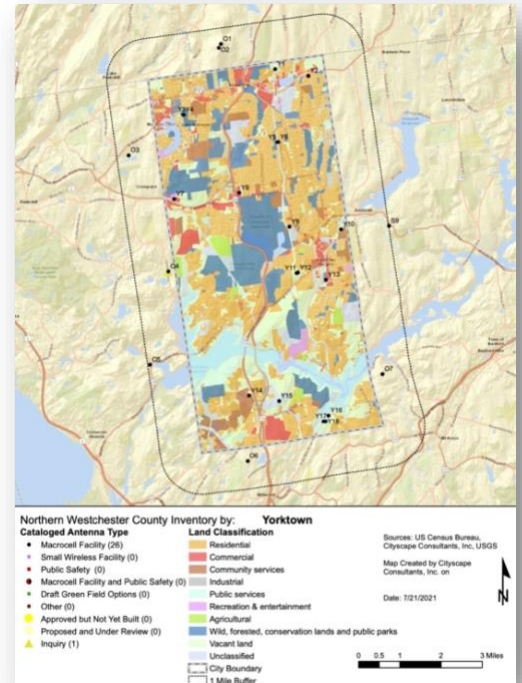
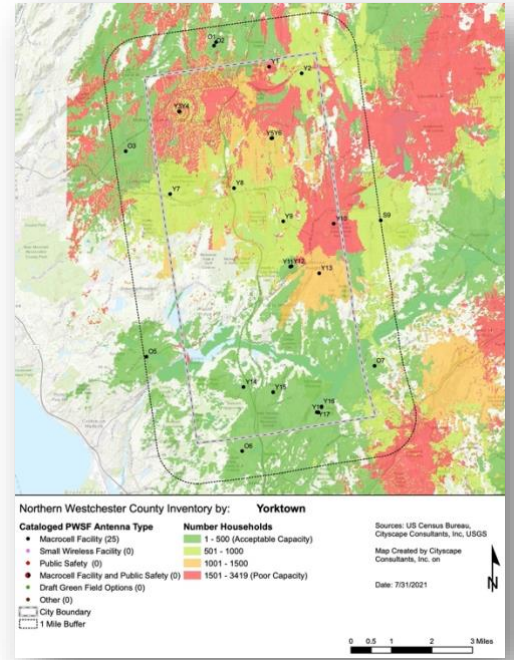
Population: 36,269

**GAP ANALYSIS**

The northeastern portion of the Town has the highest population densities but not enough wireless infrastructure to support the wireless subscriber base. A large area west of the Taconic State Parkway has a large gap in network coverages because there are no wireless facilities in that geographic area. The southeastern portion of the Town has minimal infrastructure also resulting in network gaps. Yorktown Heights has several wireless infrastructure sites, but still not enough relative to the population of the area.

**POLLING RESULTS**

RESPONSES	YORKTOWN	LARGER STUDY AREA
<b>PARTICIPANTS</b>	929	2,872
<b>Use Of Device</b>		
-Personal and Recreation/Leisure	93.8%	84.15%
- Employment Related	66.6%	66.60%
<b>Wireless Coverage at Residence Poor</b>		
- Excellent or Acceptable	32.5%	45.67%
- Poor or Inconsistent	33.3%	53.16%
<b>Wireless Coverage at Work</b>		
- Excellent or Acceptable	33.3%	37.02%
- Poor or Inconsistent	32.5%	30.02%
<b>Wireless While Travelling Around Town</b>		
- Excellent or Acceptable	44.2%	41.09%
- Poor or Inconsistent	55.0%	57.77%
<b>Would Rely More on Device if Network was Better</b>		
- Entirely Agree	67%	59.88%
<b>What is Most Important to You?</b>		
-Excellent Connectivity	69.7%	57.45%
-Good Connectivity and Minimal Visual Impact	28.2%	37.12%
<b>Prefer Taller Tower Supporting Multiple Collocations</b>	47.1%	46.22%
<b>Non-Concealed Tower Preference – Monopole</b>	68.8%	62.28%
<b>Concealed Tower Preference – Flag Pole</b>	75%	69.83%
<b>Rooftop Preference – Concealed</b>	76.1%	78.03%
<b>Small Wireless Facility Preference - Concealed</b>	90.7%	89.68%
<b>Locational Preference in Town - Anywhere</b>	67.1%	60.60%
<b>Support Use of Public Property for Revenue and Aesthetics – Yes</b>	56.7%	53.85%



**KEY POINTS OF ANALYSIS**

- The majority of existing macro antennas are on towers.
- There are very few building rooftops with antenna arrays.
- Non-concealed towers and base stations make-up the majority of the infrastructure.
- There are five (5) existing towers on Town owned property setting a precedence for using Town owned properties in future wireless deployment.
- The wireless infrastructure currently in utility easements are slated to be removed and will need to be replaced either on private or public property in the general area of the current facilities.
- Gap maps allow proactive planning for future wireless infrastructure.
- Community polling responses may be used for future policy decisions.